

# \$0 - 9411 63 Avenue, Edmonton

MLS® #E4421548

**\$0**

0 Bedroom, 0.00 Bathroom,  
Office on 0.00 Acres

Rosedale Industrial, Edmonton, AB

2390 Square feet of 2nd floor nicely developed office space with ample parking and 7 outside offices with natural light, private waiting area and private reception area, lunch room and boardroom. Highly secure space with available cameras and alarms professionally installed by Price Langevin Security Consultants. Part of a 20,000 square foot building with 6 professional tenants.

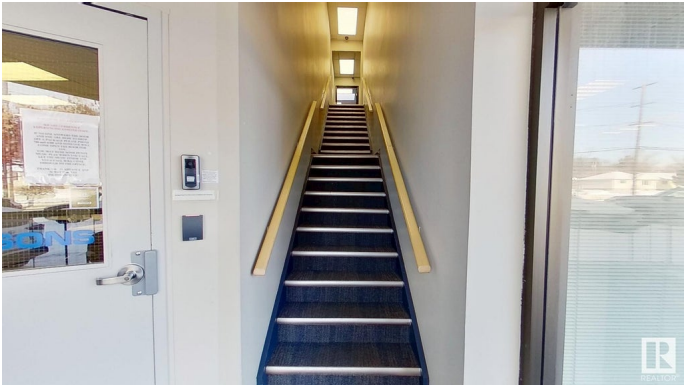
Built in 1979

## Essential Information

|            |          |
|------------|----------|
| MLS® #     | E4421548 |
| Bathrooms  | 0.00     |
| Acres      | 0.00     |
| Year Built | 1979     |
| Type       | Office   |
| Status     | Active   |

## Community Information

|             |                     |
|-------------|---------------------|
| Address     | 9411 63 Avenue      |
| Area        | Edmonton            |
| Subdivision | Rosedale Industrial |
| City        | Edmonton            |
| County      | ALBERTA             |
| Province    | AB                  |
| Postal Code | T6E 0G2             |



**Exterior**

|              |       |
|--------------|-------|
| Exterior     | Block |
| Construction | Block |

**Additional Information**

|                |                     |
|----------------|---------------------|
| Date Listed    | February 14th, 2025 |
| Days on Market | 121                 |
| Zoning         | Zone 41             |

DATA IS DEEMED RELIABLE BUT IS NOT GUARANTEED ACCURATE BY THE REALTORS® ASSOCIATION OF EDMONTON. COPYRIGHT 2025 BY THE REALTORS® ASSOCIATION OF EDMONTON. ALL RIGHTS RESERVED.Trademarks are owned or controlled by the Canadian Real Estate Association (CREA) and identify real estate professionals who are members of CREA (REALTOR®, REALTORS®) and/or the quality of services they provide (MLS®, Multiple Listing Service®)

Listing information last updated on June 15th, 2025 at 5:47am MDT