

\$149,900 - 306 5390 Chappelle Road, Edmonton

MLS® #E4430274

\$149,900

1 Bedroom, 1.00 Bathroom, 570 sqft

Condo / Townhouse on 0.00 Acres

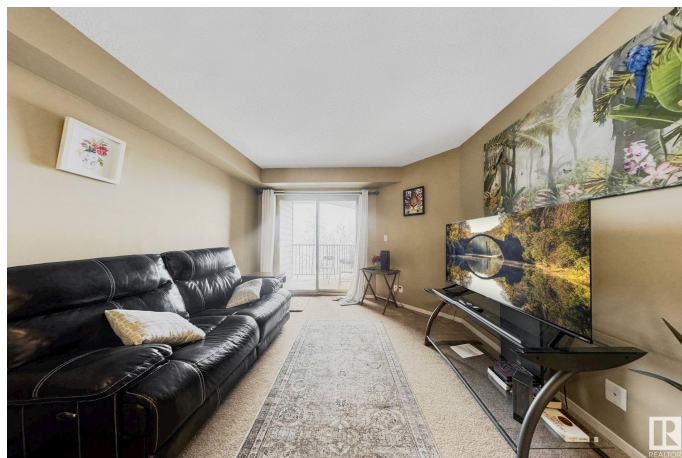
Chappelle Area, Edmonton, AB

Discover comfort and convenience in this delightful 1-bedroom plus den condo located in the heart of Chappelle Creek. Situated on the third floor of a well-kept building in a vibrant, family-friendly neighborhood, this stylish unit offers a bright and modern living space with upgraded countertops and cabinetry. Step out onto your private balcony to enjoy serene views, and take advantage of transit right at your doorstep. Whether you're entertaining guests or enjoying a quiet evening in, this home is designed for easy living. Additional features include parking and close proximity to top-rated schools, shopping, parks, golf courses, a ski hill, and quick access to the airport. This charming condo is the perfect opportunity to enjoy the best of Chappelle community living.

Built in 2016

Essential Information

MLS® #	E4430274
Price	\$149,900
Bedrooms	1
Bathrooms	1.00
Full Baths	1
Square Footage	570
Acres	0.00
Year Built	2016



Type	Condo / Townhouse
Sub-Type	Lowrise Apartment
Style	Single Level Apartment
Status	Active

Community Information

Address	306 5390 Chappelle Road
Area	Edmonton
Subdivision	Chappelle Area
City	Edmonton
County	ALBERTA
Province	AB
Postal Code	T6W 3K7

Amenities

Amenities	No Animal Home, No Smoking Home, Security Door
Parking Spaces	1
Parking	Stall

Interior

Appliances	Dishwasher-Built-In, Dryer, Microwave Hood Fan, Oven-Built-In, Refrigerator, Stove-Electric, Washer, Window Coverings
Heating	Baseboard, Natural Gas
# of Stories	4
Stories	1
Has Basement	Yes
Basement	None, No Basement

Exterior

Exterior	Wood, Vinyl
Exterior Features	Airport Nearby, Fenced, Golf Nearby, Low Maintenance Landscape, Playground Nearby, Public Transportation, Schools, Shopping Nearby, Ski Hill Nearby
Roof	Asphalt Shingles
Construction	Wood, Vinyl
Foundation	Concrete Perimeter

School Information

Elementary	Donald Getty
High	Dr. Ann Anderson

Additional Information

Date Listed	April 11th, 2025
Days on Market	20
Zoning	Zone 55
HOA Fees	50
HOA Fees Freq.	Annually
Condo Fee	\$355

DATA IS DEEMED RELIABLE BUT IS NOT GUARANTEED ACCURATE BY THE REALTORS® ASSOCIATION OF EDMONTON. COPYRIGHT 2025 BY THE REALTORS® ASSOCIATION OF EDMONTON. ALL RIGHTS RESERVED.Trademarks are owned or controlled by the Canadian Real Estate Association (CREA) and identify real estate professionals who are members of CREA (REALTOR®, REALTORS®) and/or the quality of services they provide (MLS®, Multiple Listing Service®)

Listing information last updated on May 1st, 2025 at 2:17pm MDT