

## \$145,000 - 203 9028 Jasper Avenue, Edmonton

MLS® #E4431189

**\$145,000**

2 Bedroom, 1.00 Bathroom, 903 sqft

Condo / Townhouse on 0.00 Acres

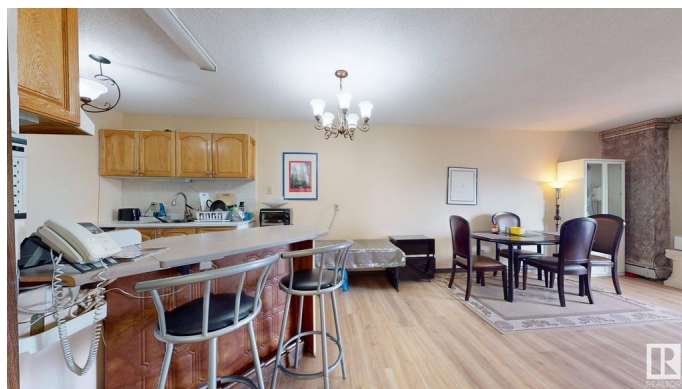
Boyle Street, Edmonton, AB

Prime Downtown Location! This bright and spacious 2-bedroom, 1-bath condo offers unbeatable value with stunning panoramic views of the River Valley â€” perfect for first-time buyers, students, young professionals, or those looking to expand their rental portfolio. Enjoy the convenience of having all utilities included â€” heat, water, and electricity â€” making it a budget-friendly and hassle-free choice. This unit also comes with one assigned underground parking stall and a secure storage space, adding even more value and practicality. Located just minutes from the Ice District, Commonwealth Recreation Centre, LRT, shopping, restaurants, cafÃ©s, nightlife, and the scenic River Valley walking/biking trails, this condo puts the best of Edmonton at your fingertips. Whether you're looking to live, rent, or invest, this is a smart move in one of Edmontonâ€™s most desirable central communities. Act fast â€” opportunities like this donâ€™t last long at this price!

Built in 1971

### Essential Information

MLS® #	E4431189
Price	\$145,000
Bedrooms	2



Bathrooms	1.00
Full Baths	1
Square Footage	903
Acres	0.00
Year Built	1971
Type	Condo / Townhouse
Sub-Type	Apartment High Rise
Style	Single Level Apartment
Status	Active

### **Community Information**

Address	203 9028 Jasper Avenue
Area	Edmonton
Subdivision	Boyle Street
City	Edmonton
County	ALBERTA
Province	AB
Postal Code	T5H 3Y6

### **Amenities**

Amenities	Security Door, Storage-Locker Room, Storage Cage
Parking	Stall, Underground

### **Interior**

Appliances	Dishwasher-Built-In, Hood Fan, Refrigerator, Stove-Electric
Heating	Hot Water, Natural Gas
# of Stories	11
Stories	1
Has Basement	Yes
Basement	None, No Basement

### **Exterior**

Exterior	Concrete, Brick
Exterior Features	Public Transportation, Ravine View, River View, Schools, Shopping Nearby, View Downtown
Roof	Tar & Gravel
Construction	Concrete, Brick
Foundation	Concrete Perimeter

### **Additional Information**

Date Listed	April 16th, 2025
Days on Market	15
Zoning	Zone 13
Condo Fee	\$866

DATA IS DEEMED RELIABLE BUT IS NOT GUARANTEED ACCURATE BY THE REALTORS® ASSOCIATION OF EDMONTON. COPYRIGHT 2025 BY THE REALTORS® ASSOCIATION OF EDMONTON. ALL RIGHTS RESERVED. Trademarks are owned or controlled by the Canadian Real Estate Association (CREA) and identify real estate professionals who are members of CREA (REALTOR®, REALTORS®) and/or the quality of services they provide (MLS®, Multiple Listing Service®)

Listing information last updated on May 1st, 2025 at 5:17pm MDT