

\$515,000 - 7304 20 Avenue, Edmonton

MLS® #E4433251

\$515,000

4 Bedroom, 3.50 Bathroom, 1,572 sqft

Single Family on 0.00 Acres

Summerside, Edmonton, AB

Welcome home to this amazing fully finished 2-storey home in the sought after community of Summerside. Upon entering you are welcomed into a family-oriented floor plan. The dining area is situated to accommodate large gatherings and has large windows to invite in the natural light. The kitchen is tastefully done with wood finished cabinets, a new Bosch over the microwave range, sit up island and stainless-steel appliances. The large family room has large windows to bring in lots of natural light and a gas fireplace to cozy up to. This home has 2000+ square feet of living space with a professionally finished basement.

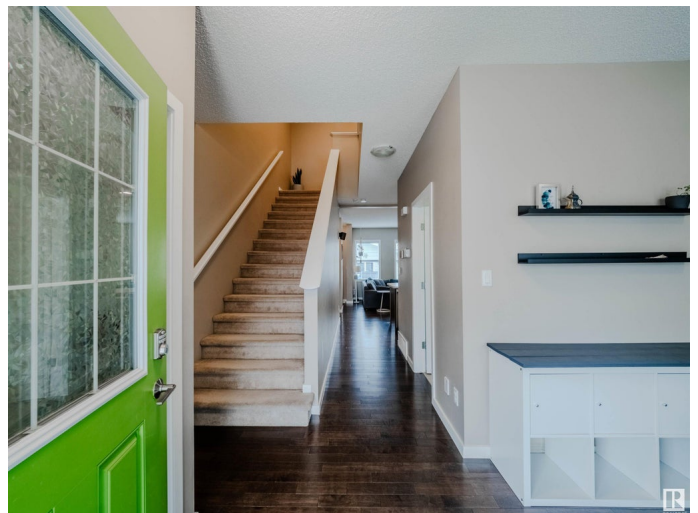
Total 4 bedrooms and 3 ½ bathrooms. The primary bedroom has a walk-in closet and a stunning 5-piece ensuite with tub and separate shower. The basement is fully finished and includes the 4th bedroom and a 4-piece bathroom and a large family room for movie night. This house has been meticulously maintained and just had a new HWT installed. All of this and you have access to Lake Summerside!

Built in 2011

Essential Information

MLS® # E4433251

Price \$515,000



Bedrooms	4
Bathrooms	3.50
Full Baths	3
Half Baths	1
Square Footage	1,572
Acres	0.00
Year Built	2011
Type	Single Family
Sub-Type	Detached Single Family
Style	2 Storey
Status	Active

Community Information

Address	7304 20 Avenue
Area	Edmonton
Subdivision	Summerside
City	Edmonton
County	ALBERTA
Province	AB
Postal Code	T6X 0L5

Amenities

Amenities	Deck, Lake Privileges
Parking	Double Garage Detached

Interior

Interior Features	ensuite bathroom
Appliances	Dishwasher-Built-In, Dryer, Garage Control, Garage Opener, Microwave Hood Fan, Refrigerator, Stove-Electric, Window Coverings
Heating	Forced Air-1, Natural Gas
Stories	3
Has Basement	Yes
Basement	Full, Finished

Exterior

Exterior	Wood, Vinyl
Exterior Features	Back Lane, Fenced, Landscaped, Playground Nearby, Public Transportation, Schools, Shopping Nearby
Roof	Asphalt Shingles

Construction	Wood, Vinyl
Foundation	Concrete Perimeter

Additional Information

Date Listed	April 29th, 2025
Days on Market	2
Zoning	Zone 53
HOA Fees	453.02
HOA Fees Freq.	Annually

DATA IS DEEMED RELIABLE BUT IS NOT GUARANTEED ACCURATE BY THE REALTORS® ASSOCIATION OF EDMONTON. COPYRIGHT 2025 BY THE REALTORS® ASSOCIATION OF EDMONTON. ALL RIGHTS RESERVED.Trademarks are owned or controlled by the Canadian Real Estate Association (CREA) and identify real estate professionals who are members of CREA (REALTOR®, REALTORS®) and/or the quality of services they provide (MLS®, Multiple Listing Service®)

Listing information last updated on May 1st, 2025 at 6:02am MDT