

\$80,000 - 310 10160 114 Street, Edmonton

MLS® #E4434696

\$80,000

1 Bedroom, 1.00 Bathroom, 435 sqft

Condo / Townhouse on 0.00 Acres

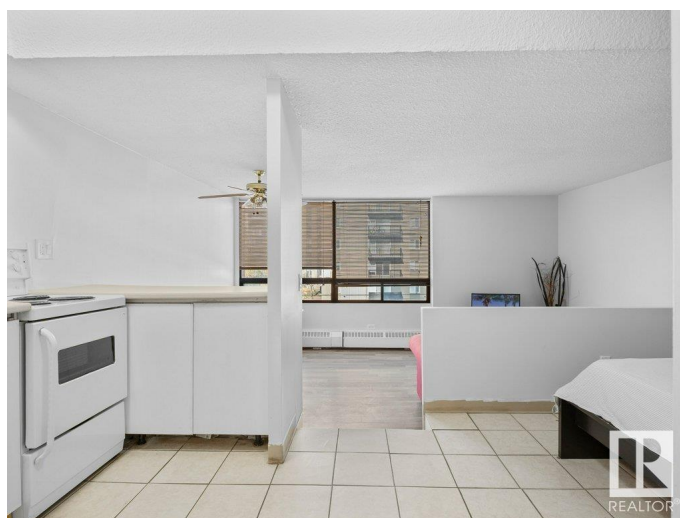
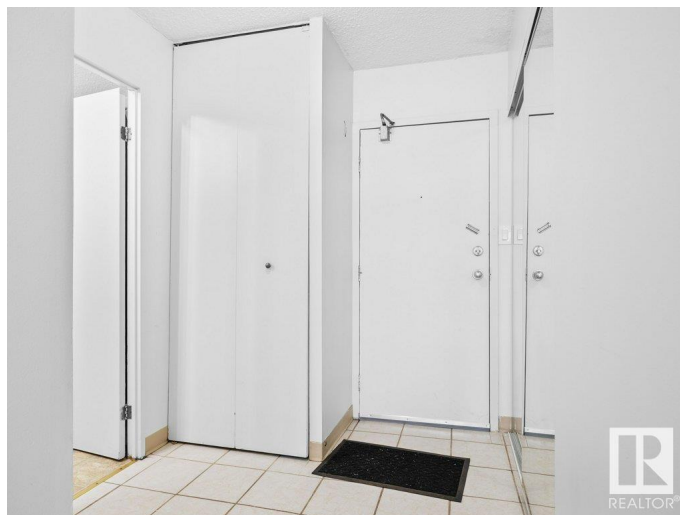
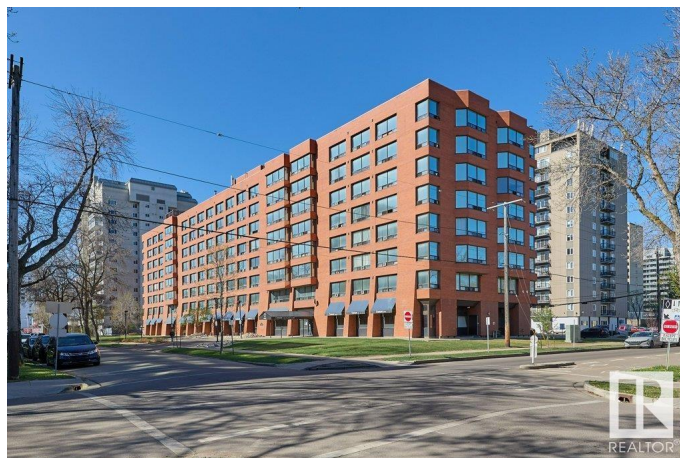
Wähkwäntäwin, Edmonton, AB

Check out this cute suite in the heart of Oliver. The building is concrete and steel and is safe and quiet. There is heated underground parking and tons of amenities within a short walk. There is laundry facilities on each floor and the unit is bright and faces West. There is a kitchen, bedroom area, living room, dining area and a full bath. Perfect for college students, retirees, investment, commuters who work in Edmonton or live elsewhere or great as a first property for young people. The location is super close to the river valley, Grant MacEwan University, Roger's Place and all that downtown Edmonton has to offer. The condo fee includes all utilities and there is nothing to do but move in and enjoy. Great value for a condo in the downtown of a major city.

Built in 1979

Essential Information

MLS® #	E4434696
Price	\$80,000
Bedrooms	1
Bathrooms	1.00
Full Baths	1
Square Footage	435
Acres	0.00
Year Built	1979



Type	Condo / Townhouse
Sub-Type	Apartment High Rise
Style	Single Level Apartment
Status	Active

Community Information

Address	310 10160 114 Street
Area	Edmonton
Subdivision	WÃ©hkwÃ©ntÃ©win
City	Edmonton
County	ALBERTA
Province	AB
Postal Code	T5K 2L2

Amenities

Amenities	Detectors Smoke, Exterior Walls- 2"x6", Hot Water Natural Gas, Intercom, No Animal Home, No Smoking Home, Parking-Visitor, Secured Parking, Security Door, Television Connection
Parking	Heated, Underground

Interior

Appliances	Dishwasher-Built-In, Refrigerator, Stove-Electric
Heating	Baseboard, Natural Gas
# of Stories	8
Stories	1
Has Basement	Yes
Basement	None, No Basement

Exterior

Exterior	Concrete, Brick
Exterior Features	Back Lane, Corner Lot, Flat Site, Golf Nearby, Landscaped, Not Fenced, Park/Reserve, Playground Nearby, Public Swimming Pool, Public Transportation, Schools, Shopping Nearby, View Downtown
Roof	Tar & Gravel
Construction	Concrete, Brick
Foundation	Concrete Perimeter

Additional Information

Date Listed	May 6th, 2025
Days on Market	6

Zoning	Zone 12
Condo Fee	\$504

DATA IS DEEMED RELIABLE BUT IS NOT GUARANTEED ACCURATE BY THE REALTORS® ASSOCIATION OF EDMONTON. COPYRIGHT 2025 BY THE REALTORS® ASSOCIATION OF EDMONTON. ALL RIGHTS RESERVED. Trademarks are owned or controlled by the Canadian Real Estate Association (CREA) and identify real estate professionals who are members of CREA (REALTOR®, REALTORS®) and/or the quality of services they provide (MLS®, Multiple Listing Service®)

Listing information last updated on May 12th, 2025 at 8:17pm MDT