

\$969,000 - 1125 Gyrfalcon Crescent, Edmonton

MLS® #E4434936

\$969,000

3 Bedroom, 3.00 Bathroom, 2,831 sqft
Single Family on 0.00 Acres

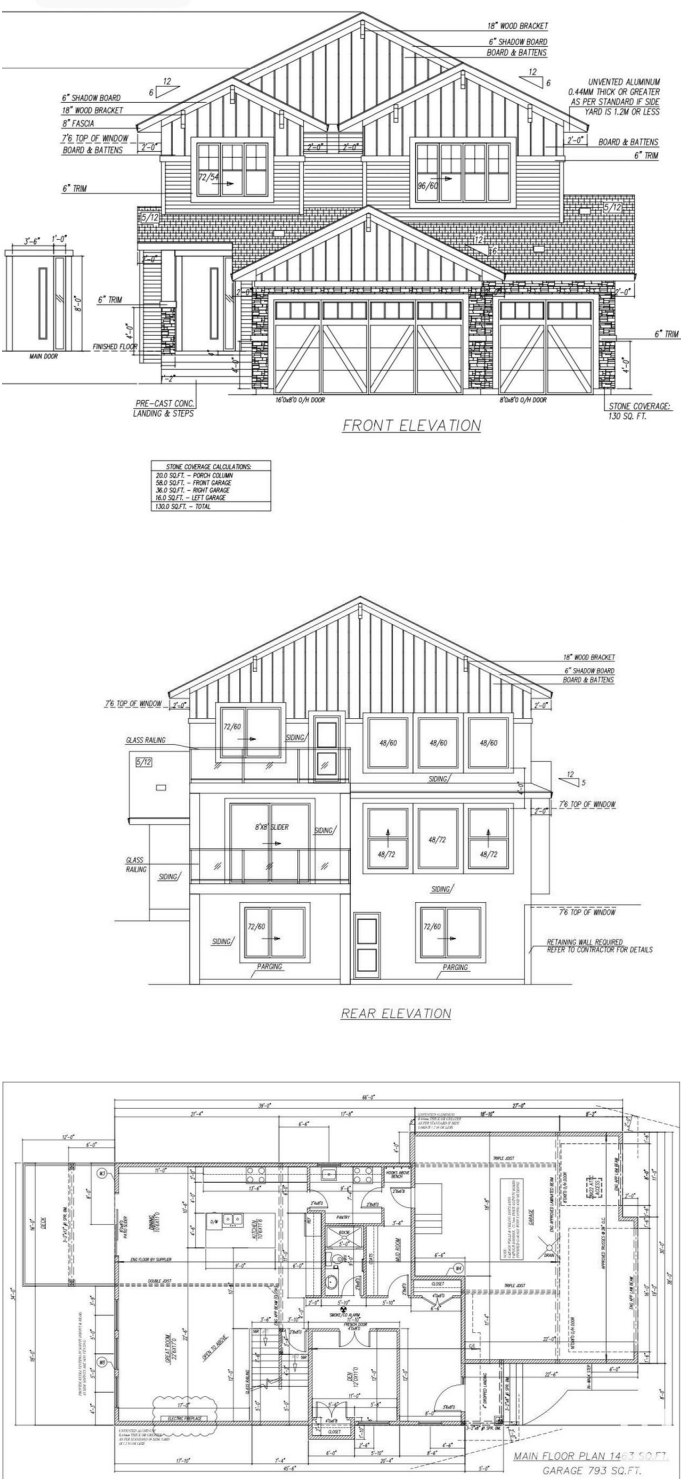
Hawks Ridge, Edmonton, AB

Welcome to this exceptional walkout, triple garage custom-built home in the scenic community of Hawks Ridge, backing directly onto a creek and lush green space. Nestled beside Big Lake and surrounded by ponds, wetlands, and walking trails, this nature-rich setting also offers quick access to shopping, recreation, and all lifestyle amenities. Featuring approximately 2,850 sq.ft. of beautifully designed living space, this home offers a main floor bedroom/den with a full 3-pc bath, soaring open-to-above ceilings in the living room, and a spice kitchen perfect for serious home chefs. The upper level boasts a luxurious primary suite with a spa-like 5-pc ensuite and massive walk-in closet, along with two additional bedrooms each with their own walk-in closets a convenient laundry room, and a spacious bonus room overlooking the main floor. Still under construction, this home can be customized with your preferred finishes and color schemes. Possession available Nov/Dec 2025. Donâ€™t miss this rare opportunity!

Built in 2025

Essential Information

MLS® # E4434936
Price \$969,000



Bedrooms	3
Bathrooms	3.00
Full Baths	3
Square Footage	2,831
Acres	0.00
Year Built	2025
Type	Single Family
Sub-Type	Detached Single Family
Style	2 Storey
Status	Active

Community Information

Address	1125 Gyrfalcon Crescent
Area	Edmonton
Subdivision	Hawks Ridge
City	Edmonton
County	ALBERTA
Province	AB
Postal Code	T5S 0S5

Amenities

Amenities	Ceiling 10 ft., Deck, Secured Parking, See Remarks, 9 ft. Basement Ceiling
Parking	Triple Garage Attached

Interior

Interior Features	ensuite bathroom
Appliances	See Remarks
Heating	Forced Air-1, Natural Gas
Fireplace	Yes
Fireplaces	Glass Door
Stories	2
Has Basement	Yes
Basement	Full, Unfinished

Exterior

Exterior	Wood, Stone, Vinyl
Exterior Features	Commercial, Creek, Schools, See Remarks
Roof	Asphalt Shingles

Construction	Wood, Stone, Vinyl
Foundation	Concrete Perimeter

School Information

Elementary	DAVID THOMAS KING SCHOOL
Middle	DAVID THOMAS KING SCHOOL
High	JASPER PLACE SCHOOL

Additional Information

Date Listed	May 6th, 2025
Days on Market	9
Zoning	Zone 59

DATA IS DEEMED RELIABLE BUT IS NOT GUARANTEED ACCURATE BY THE REALTORS® ASSOCIATION OF EDMONTON. COPYRIGHT 2025 BY THE REALTORS® ASSOCIATION OF EDMONTON. ALL RIGHTS RESERVED.Trademarks are owned or controlled by the Canadian Real Estate Association (CREA) and identify real estate professionals who are members of CREA (REALTOR®, REALTORS®) and/or the quality of services they provide (MLS®, Multiple Listing Service®)

Listing information last updated on May 15th, 2025 at 11:03am MDT