

## \$430,000 - 5385 Crabapple Loop, Edmonton

MLS® #E4435081

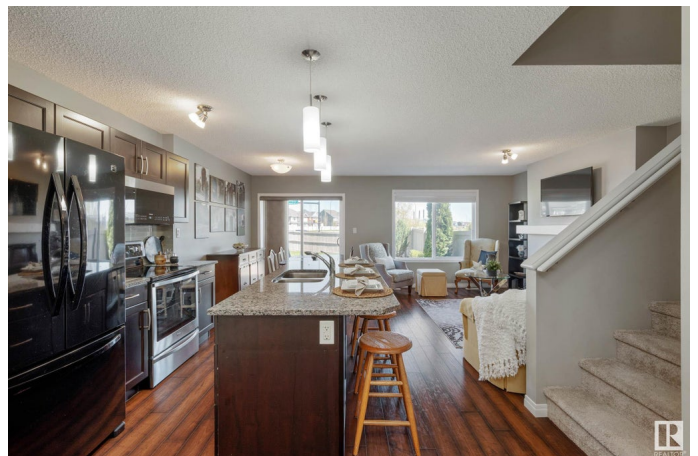
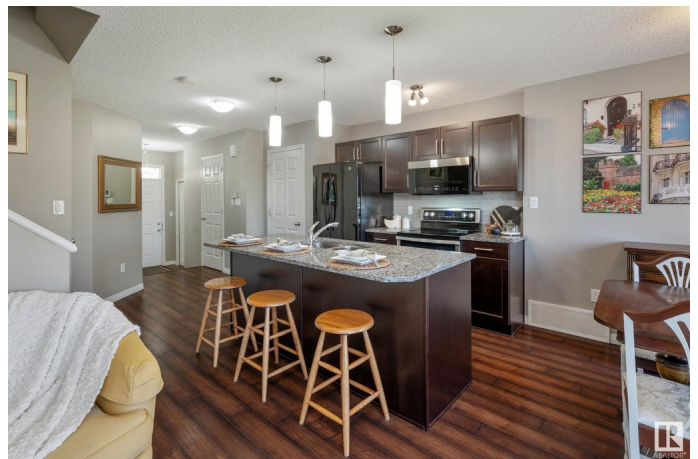
**\$430,000**

3 Bedroom, 2.50 Bathroom, 1,429 sqft

Single Family on 0.00 Acres

The Orchards At Ellerslie, Edmonton, AB

IMMACULATE half-duplex in the heart of THE ORCHARDS is ready to welcome your family! Steps away from schools & all local amenities makes this a PERFECT location. Plus, get involved with The Orchards Club House & watch your family "blossom" this season. Charming curb appeal situated on private CUL-DE-SAC with beautiful professional landscaping on massive 518m<sup>2</sup> lot. Fully fenced back yard is a DREAM with its 2 tiered-deck, lush gardens & abundance of space for kids to play. Welcoming foyer w/closet & man-door to single attached garage transitions to open concept great room showcasing rich dark flooring, electric F/P & desired colour pallet throughout. Great entertaining kitchen features eat-on centre island, quartz countertops, pantry, all appliances & great backyard views off dinette. Bright upper-level owners suite is complimented by private 4 pc ensuite & large WIC. 2 additional jr. rooms, laundry room w/shelving & 4pc bath. Unfinished basement awaits your personal touch! Central A/C! check!!! MUST SEE!!!



Built in 2013

### Essential Information

MLS® # E4435081

Price \$430,000

Bedrooms	3
Bathrooms	2.50
Full Baths	2
Half Baths	1
Square Footage	1,429
Acres	0.00
Year Built	2013
Type	Single Family
Sub-Type	Half Duplex
Style	2 Storey
Status	Active

### Community Information

Address	5385 Crabapple Loop
Area	Edmonton
Subdivision	The Orchards At Ellerslie
City	Edmonton
County	ALBERTA
Province	AB
Postal Code	T6X 1S5

### Amenities

Amenities	Air Conditioner, Ceiling 9 ft., Deck, Detectors Smoke, Television Connection, Vinyl Windows
Parking Spaces	2
Parking	Front Drive Access, Single Garage Attached

### Interior

Interior Features	ensuite bathroom
Appliances	Air Conditioning-Central, Dishwasher-Built-In, Dryer, Garage Control, Garage Opener, Microwave Hood Fan, Refrigerator, Stove-Electric, Washer, Window Coverings
Heating	Forced Air-1, Natural Gas
Fireplace	Yes
Fireplaces	Insert, Mantel
Stories	2
Has Basement	Yes
Basement	Full, Unfinished

### Exterior

Exterior	Wood, Stone, Vinyl
Exterior Features	Cul-De-Sac, Landscaped, No Back Lane, Picnic Area, Playground Nearby, Public Transportation, Recreation Use, Schools, Shopping Nearby
Roof	Asphalt Shingles
Construction	Wood, Stone, Vinyl
Foundation	Concrete Perimeter

### **School Information**

Elementary	JAN REIMER SCHOOL
Middle	JAN REIMER SCHOOL
High	J. PERCY PAGE SCHOOL

### **Additional Information**

Date Listed	May 8th, 2025
Days on Market	1
Zoning	Zone 53
HOA Fees	425
HOA Fees Freq.	Annually

DATA IS DEEMED RELIABLE BUT IS NOT GUARANTEED ACCURATE BY THE REALTORS® ASSOCIATION OF EDMONTON. COPYRIGHT 2025 BY THE REALTORS® ASSOCIATION OF EDMONTON. ALL RIGHTS RESERVED. Trademarks are owned or controlled by the Canadian Real Estate Association (CREA) and identify real estate professionals who are members of CREA (REALTOR®, REALTORS®) and/or the quality of services they provide (MLS®, Multiple Listing Service®)

Listing information last updated on May 9th, 2025 at 2:47pm MDT