

## \$465,000 - 9307 128 Avenue, Edmonton

MLS® #E4441145

**\$465,000**

6 Bedroom, 2.00 Bathroom, 980 sqft

Single Family on 0.00 Acres

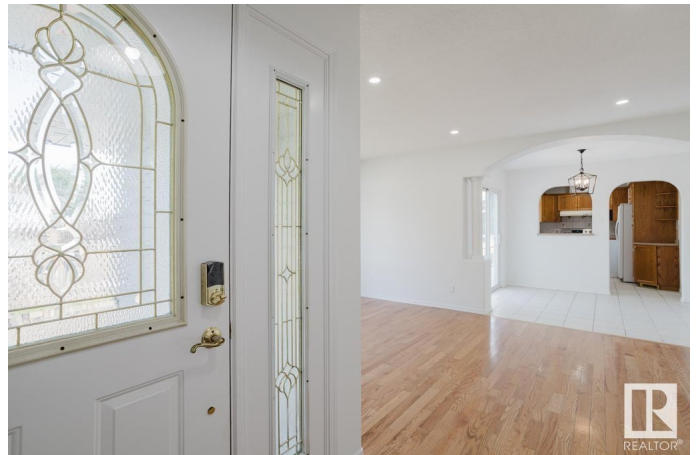
Killarney, Edmonton, AB

Five bedroom bungalow with inlaw suite in the lower level. This 980 square foot bungalow features new windows, plus furnace, hot water tank, flooring, and fresh paint. Three bedrooms on the main floor, with living room having hardwood flooring, separate dining room with sliding door to a large deck, 4 piece bath and stacking washer dryer. The lower level has a separate entrance, 2 bedrooms, 4 piece bath, second kitchen, and full size laundry set. Nicely set up an an inlaw suite currently. Detached double garage is heated for your vehicles comfort come Winter. Upgrades to the Property include new shingles on the Home and garage, new windows up and down, 2 furnaces (new basement furnace), new vinyl siding, all new lighting thru the Property, security cameras, 2 power meters and freshly painted on both floors. Corner lot has good sized fenced yard for all to enjoy in privacy. Situated close to shopping and public transit.

Built in 1961

### Essential Information

MLS® #	E4441145
Price	\$465,000
Bedrooms	6
Bathrooms	2.00



Full Baths	2
Square Footage	980
Acres	0.00
Year Built	1961
Type	Single Family
Sub-Type	Detached Single Family
Style	Bungalow
Status	Active

### Community Information

Address	9307 128 Avenue
Area	Edmonton
Subdivision	Killarney
City	Edmonton
County	ALBERTA
Province	AB
Postal Code	T5E 0H3

### Amenities

Amenities	Deck
Parking Spaces	4
Parking	Double Garage Detached, Heated, Over Sized

### Interior

Appliances	Dishwasher-Built-In, Dryer, Garage Control, Garage Opener, Hood Fan, Stacked Washer/Dryer, Washer, Window Coverings, Refrigerators-Two, Stoves-Two
Heating	Forced Air-1, Natural Gas
Stories	2
Has Suite	Yes
Has Basement	Yes
Basement	Full, Finished

### Exterior

Exterior	Wood, Vinyl
Exterior Features	Back Lane, Corner Lot, Fenced, Landscaped, Playground Nearby, Public Transportation, Schools, Shopping Nearby
Roof	Asphalt Shingles
Construction	Wood, Vinyl

Foundation                Concrete Perimeter

**School Information**

Elementary                Mee-Yah-Noh  
Middle                      Killarney Junior High  
High                         Queen Elizabeth

**Additional Information**

Date Listed                June 6th, 2025  
Days on Market        10  
Zoning                      Zone 02

DATA IS DEEMED RELIABLE BUT IS NOT GUARANTEED ACCURATE BY THE REALTORS® ASSOCIATION OF EDMONTON. COPYRIGHT 2025 BY THE REALTORS® ASSOCIATION OF EDMONTON. ALL RIGHTS RESERVED.Trademarks are owned or controlled by the Canadian Real Estate Association (CREA) and identify real estate professionals who are members of CREA (REALTOR®, REALTORS®) and/or the quality of services they provide (MLS®, Multiple Listing Service®)  
Listing information last updated on June 15th, 2025 at 11:17pm MDT