

\$189,900 - 604 62 Street, Edmonton

MLS® #E4442040

\$189,900

2 Bedroom, 1.00 Bathroom, 812 sqft

Condo / Townhouse on 0.00 Acres

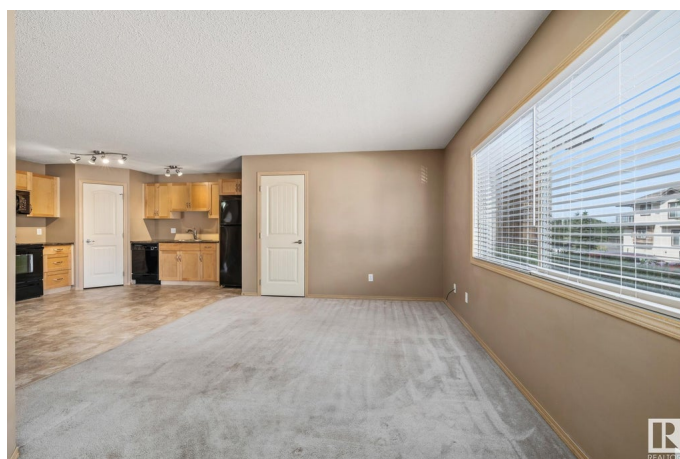
Charlesworth, Edmonton, AB

Start fresh in this bright and spacious 2-bedroom, 1-bath bungalow-style condo in the sought-after community of Charlesworth. This well-maintained unit offers a functional open-concept layout with a large living area, dedicated dining space, and a stylish kitchen featuring black appliances, maple cabinetry, and a walk-in pantry. Natural light floods the space through oversized windows, while the generous bedroom includes dual closets and easy access to the 4-piece bath. You'll appreciate the convenience of in-suite laundry, dedicated storage, and 2 exterior parking stalls. A private entrance and front patio enhance everyday comfort. Perfect for first-time buyers, investors, or downsizers. Located close to schools, parks, shopping, and major roadways—this home offers a low-maintenance lifestyle in a vibrant and connected neighborhood.

Built in 2008

Essential Information

MLS® #	E4442040
Price	\$189,900
Bedrooms	2
Bathrooms	1.00
Full Baths	1
Square Footage	812



Acres	0.00
Year Built	2008
Type	Condo / Townhouse
Sub-Type	Townhouse
Style	Bungalow
Status	Active

Community Information

Address	604 62 Street
Area	Edmonton
Subdivision	Charlesworth
City	Edmonton
County	ALBERTA
Province	AB
Postal Code	T6X 0K4

Amenities

Amenities	Parking-Extra, Parking-Visitor, Storage-In-Suite, Television Connection
Parking Spaces	2
Parking	2 Outdoor Stalls

Interior

Appliances	Dishwasher-Built-In, Dryer, Microwave Hood Fan, Refrigerator, Stove-Electric, Washer, Window Coverings
Heating	Forced Air-1, Natural Gas
Stories	1
Has Basement	Yes
Basement	None, No Basement

Exterior

Exterior	Wood, Stone, Stucco, Vinyl
Exterior Features	Corner Lot, Landscaped, Playground Nearby, Public Transportation, Schools, Shopping Nearby
Roof	Asphalt Shingles
Construction	Wood, Stone, Stucco, Vinyl
Foundation	Concrete Perimeter

School Information

Elementary	Ellerslie Campus School
------------	-------------------------

Middle	Ellerslie Campus School
High	Elder Dr. Francis Whiskeyj

Additional Information

Date Listed	June 12th, 2025
Days on Market	4
Zoning	Zone 53
Condo Fee	\$340

DATA IS DEEMED RELIABLE BUT IS NOT GUARANTEED ACCURATE BY THE REALTORS® ASSOCIATION OF EDMONTON. COPYRIGHT 2025 BY THE REALTORS® ASSOCIATION OF EDMONTON. ALL RIGHTS RESERVED. Trademarks are owned or controlled by the Canadian Real Estate Association (CREA) and identify real estate professionals who are members of CREA (REALTOR®, REALTORS®) and/or the quality of services they provide (MLS®, Multiple Listing Service®)

Listing information last updated on June 15th, 2025 at 10:32pm MDT