

\$574,900 - 7566 165a Avenue, Edmonton

MLS® #E4442790

\$574,900

4 Bedroom, 3.50 Bathroom, 2,047 sqft

Single Family on 0.00 Acres

Maylieuan, Edmonton, AB

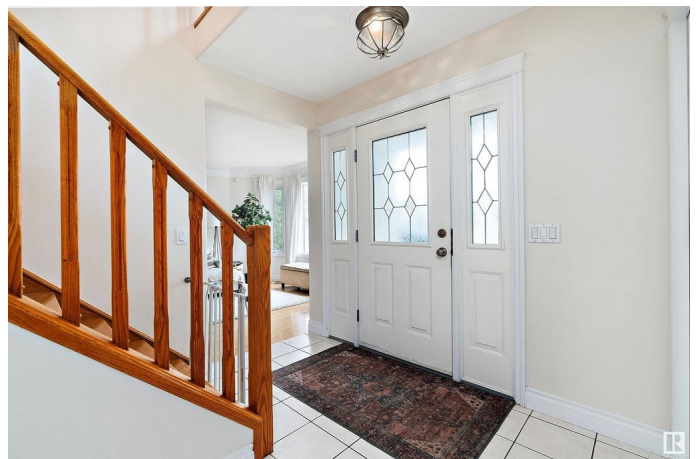
Nestled in a quiet cul-de-sac, this spacious 4-BEDROOM UP, 3.5-bathroom home offers exceptional living inside and out. With over 7,200 sqft of outdoor space, the generous pie-shaped lot features a beautifully landscaped backyard filled with FRUIT TREES—3 APPLE, 1 PLUM, and 1 CHERRY for your private orchard experience. Step inside to find a CARPET-FREE HOME with high-quality finishes, California knockdown ceilings, and a bright, functional layout. The main floor boasts a formal living room and a cozy family room, perfect for entertaining and everyday living. Upstairs, all 4 bedrooms are generously sized, ideal for growing families. The fully finished basement adds even more living space, while the large double HEATED garage offers ample parking and storage. Recent upgrades include central AIR CONDITIONING, a new hot water tank (2024), and shingles (approx. 5 years old). Just steps from St. John Bosco K-6 School, playgrounds, a tranquil lake, and walking trails make this location perfect for any family.

Built in 2002

Essential Information

MLS® # E4442790

Price \$574,900



Bedrooms	4
Bathrooms	3.50
Full Baths	3
Half Baths	1
Square Footage	2,047
Acres	0.00
Year Built	2002
Type	Single Family
Sub-Type	Detached Single Family
Style	2 Storey
Status	Active

Community Information

Address	7566 165a Avenue
Area	Edmonton
Subdivision	Mayliewan
City	Edmonton
County	ALBERTA
Province	AB
Postal Code	T5Z 3P9

Amenities

Amenities	Air Conditioner, No Animal Home, No Smoking Home
Parking	Double Garage Attached

Interior

Interior Features	ensuite bathroom
Appliances	Air Conditioning-Central, Dishwasher-Built-In, Dryer, Hood Fan, Refrigerator, Stove-Electric, Washer, Window Coverings
Heating	Forced Air-1, Natural Gas
Stories	3
Has Basement	Yes
Basement	Full, Finished

Exterior

Exterior	Wood, Stucco
Exterior Features	Cul-De-Sac, Fruit Trees/Shrubs, Landscaped, Public Transportation, Schools, Shopping Nearby
Roof	Asphalt Shingles

Construction	Wood, Stucco
Foundation	Concrete Perimeter

Additional Information

Date Listed	June 17th, 2025
Days on Market	21
Zoning	Zone 28

DATA IS DEEMED RELIABLE BUT IS NOT GUARANTEED ACCURATE BY THE REALTORS® ASSOCIATION OF EDMONTON. COPYRIGHT 2025 BY THE REALTORS® ASSOCIATION OF EDMONTON. ALL RIGHTS RESERVED.Trademarks are owned or controlled by the Canadian Real Estate Association (CREA) and identify real estate professionals who are members of CREA (REALTOR®, REALTORS®) and/or the quality of services they provide (MLS®, Multiple Listing Service®)

Listing information last updated on July 8th, 2025 at 10:48am MDT