

## \$499,800 - 1917 108 Street, Edmonton

MLS® #E4442889

**\$499,800**

5 Bedroom, 3.00 Bathroom, 1,158 sqft  
Single Family on 0.00 Acres

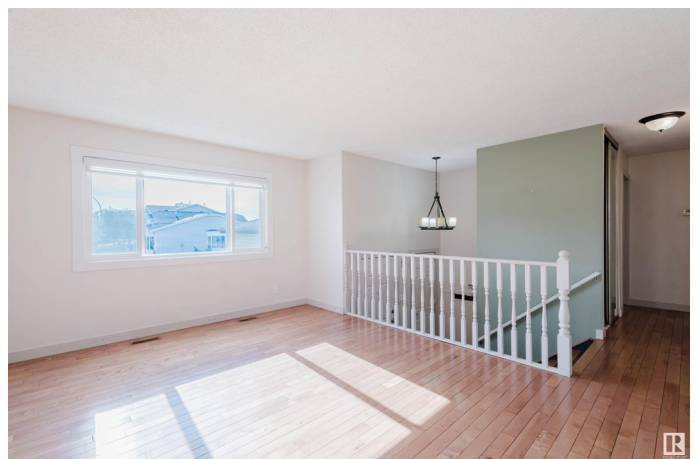
Keheewin, Edmonton, AB

BACKING ONTO Keheewin Park! Renovated 1150+ sqft bi-level home located on a quiet street in Keheewin - Steps to Keheewin Elementary School, YMCA, Heritage shopping center and much more! This fully finished home offers 3+2 bedrooms, 3 full bathrooms & an oversized attached double garage. Main floor features hardwood & tile flooring throughout. Bright west facing living room & formal dining room. Upgraded kitchen has newer full-height cabinets, granite counters and stainless steel appliances. 3 good sized bedrooms and the primary bedroom has a 4 pc ensuite & W/I closet. Bright & well-lit basement has a large family room with a brick faced wood burning fireplace. TWO more bedrooms and a 4pc full bath. Backyard has a newer fence and large deck with a view of the park and a gate for access to the park & green space. Super convenient location within walking distance to Century Park LRT, shopping and all other amenities.

Built in 1987

### Essential Information

MLS® #	E4442889
Price	\$499,800
Bedrooms	5
Bathrooms	3.00



Full Baths	3
Square Footage	1,158
Acres	0.00
Year Built	1987
Type	Single Family
Sub-Type	Detached Single Family
Style	Bi-Level
Status	Active

### Community Information

Address	1917 108 Street
Area	Edmonton
Subdivision	Keheewin
City	Edmonton
County	ALBERTA
Province	AB
Postal Code	T6J 5V4

### Amenities

Amenities	Deck, Detectors Smoke, Vinyl Windows
Parking Spaces	4
Parking	Double Garage Attached

### Interior

Interior Features	ensuite bathroom
Appliances	Dishwasher-Built-In, Dryer, Freezer, Garage Control, Garage Opener, Microwave Hood Fan, Refrigerator, Stove-Electric, Washer, Window Coverings
Heating	Forced Air-1, Natural Gas
Stories	2
Has Basement	Yes
Basement	Full, Finished

### Exterior

Exterior	Wood, Vinyl
Exterior Features	Fenced, Flat Site, Landscaped, Playground Nearby, Public Transportation, Schools, Shopping Nearby
Roof	Asphalt Shingles
Construction	Wood, Vinyl

Foundation                      Concrete Perimeter

**School Information**

Elementary                      Keheewin School  
Middle                              D.S. MacKenzie School  
High                                 Harry Ainlay School

**Additional Information**

Date Listed                      June 18th, 2025  
Days on Market                22  
Zoning                              Zone 16

DATA IS DEEMED RELIABLE BUT IS NOT GUARANTEED ACCURATE BY THE REALTORS® ASSOCIATION OF EDMONTON. COPYRIGHT 2025 BY THE REALTORS® ASSOCIATION OF EDMONTON. ALL RIGHTS RESERVED.Trademarks are owned or controlled by the Canadian Real Estate Association (CREA) and identify real estate professionals who are members of CREA (REALTOR®, REALTORS®) and/or the quality of services they provide (MLS®, Multiple Listing Service®)  
Listing information last updated on July 10th, 2025 at 1:47pm MDT