

\$259,000 - 201 10003 87 Avenue, Edmonton

MLS® #E4443277

\$259,000

2 Bedroom, 1.00 Bathroom, 846 sqft

Condo / Townhouse on 0.00 Acres

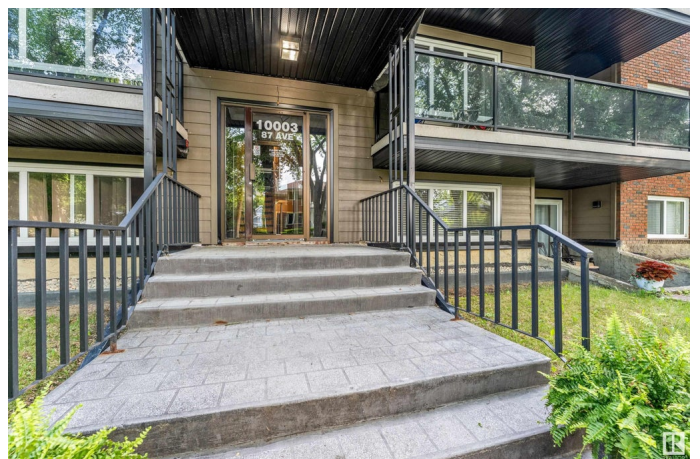
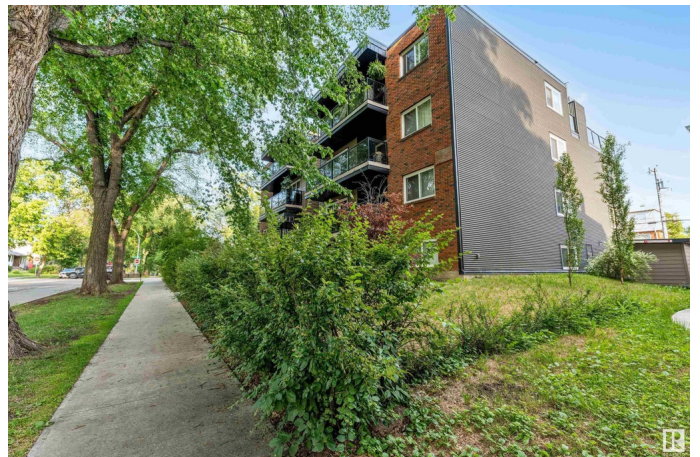
Strathcona, Edmonton, AB

FANTASTIC LOCATION! Welcome to Strathcona, one of Edmonton's most dynamic and sought-after neighborhoods. This stylishly updated upper-level condo offers 2 bedrooms and 1 bathroom and is completely move-in ready. Featuring hardwood floors, granite countertops, and custom raised kitchen cabinets, the open-concept layout is bright and functional. The kitchen is equipped with stainless steel appliances and opens onto a spacious living area with access to a large balcony—ideal for entertaining or unwinding. The primary bedroom and large windows fill the home with natural light. Just a short walk to Whyte Avenue's vibrant restaurants, cafes, boutiques, and nightlife, and only minutes from downtown, the river valley, Mill Creek Ravine, schools, and transit. Whether you're a first-time homebuyer, investor, or looking to downsize, this is a prime opportunity in an unbeatable location. Immediate possession available.

Built in 1981

Essential Information

| | |
|-----------|-----------|
| MLS® # | E4443277 |
| Price | \$259,000 |
| Bedrooms | 2 |
| Bathrooms | 1.00 |



| | |
|----------------|------------------------|
| Full Baths | 1 |
| Square Footage | 846 |
| Acres | 0.00 |
| Year Built | 1981 |
| Type | Condo / Townhouse |
| Sub-Type | Lowrise Apartment |
| Style | Single Level Apartment |
| Status | Active |

Community Information

| | |
|-------------|---------------------|
| Address | 201 10003 87 Avenue |
| Area | Edmonton |
| Subdivision | Strathcona |
| City | Edmonton |
| County | ALBERTA |
| Province | AB |
| Postal Code | T6P 2P1 |

Amenities

| | |
|-----------|--|
| Amenities | On Street Parking, Intercom, Security Door |
| Parking | Stall |

Interior

| | |
|--------------|---|
| Appliances | Dishwasher-Built-In, Euro Washer/Dryer Combo, Microwave Hood Fan, Refrigerator, Stove-Countertop Electric, Window Coverings |
| Heating | Hot Water, Natural Gas |
| # of Stories | 4 |
| Stories | 4 |
| Has Basement | Yes |
| Basement | See Remarks |

Exterior

| | |
|-------------------|---|
| Exterior | Wood, Brick, Stucco |
| Exterior Features | Back Lane, Playground Nearby, Public Transportation, Schools, Shopping Nearby |
| Roof | Unknown |
| Construction | Wood, Brick, Stucco |
| Foundation | See Remarks |

School Information

| | |
|------------|--------------------|
| Elementary | King Edward School |
| Middle | Allendale School |
| High | Strathcona School |

Additional Information

| | |
|----------------|-----------------|
| Date Listed | June 19th, 2025 |
| Days on Market | 90 |
| Zoning | Zone 15 |
| Condo Fee | \$542 |

DATA IS DEEMED RELIABLE BUT IS NOT GUARANTEED ACCURATE BY THE REALTORS® ASSOCIATION OF EDMONTON. COPYRIGHT 2025 BY THE REALTORS® ASSOCIATION OF EDMONTON. ALL RIGHTS RESERVED. Trademarks are owned or controlled by the Canadian Real Estate Association (CREA) and identify real estate professionals who are members of CREA (REALTOR®, REALTORS®) and/or the quality of services they provide (MLS®, Multiple Listing Service®)

Listing information last updated on September 17th, 2025 at 7:02am MDT