

Courtesy Of David C St. Jean Of Exp Realty

\$438,250 - 655 173 Avenue, Edmonton

MLS® #E4443623

\$438,250

3 Bedroom, 2.50 Bathroom, 1,410 sqft
Single Family on 0.00 Acres

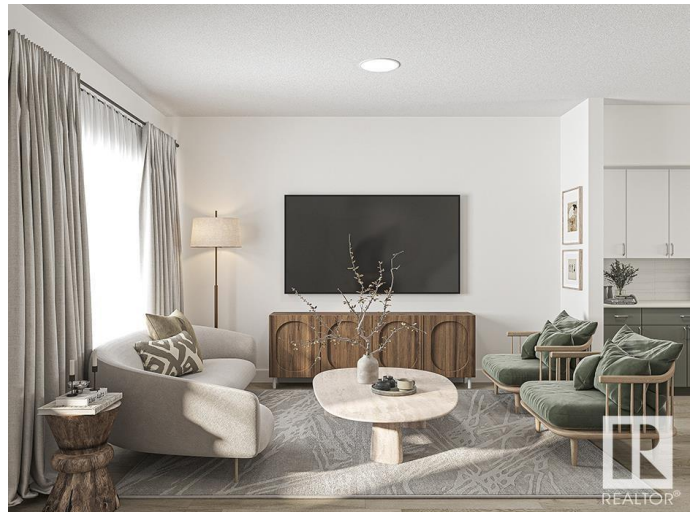
Marquis, Edmonton, AB

Discover comfort and style in the Stellar™ a home where elegance meets function. The main floor offers LVP flooring, a welcoming foyer with coat closet, and a bright great room filled with natural light. The central kitchen features quartz counters, a Silgranit undermount sink, island with eating ledge, ample cabinets, and a large pantry. At the rear, enjoy a dining area with backyard views, a half-bath, and access to a spacious yard with parking pad and optional double garage. Upstairs, relax in the open loft or retreat to the primary suite with walk-in closet and 3pc ensuite with stand-up shower. Two additional bedrooms, a 3pc main bath, and laundry closet with stackable setup complete the upper level. Black plumbing and lighting fixtures, 9' ceilings on the main and basement levels, a separate side entrance, and basement rough-ins for future development are all included—designed to meet today's modern living needs with timeless charm.

Built in 2025

Essential Information

MLS® #	E4443623
Price	\$438,250
Bedrooms	3
Bathrooms	2.50



Full Baths	2
Half Baths	1
Square Footage	1,410
Acres	0.00
Year Built	2025
Type	Single Family
Sub-Type	Detached Single Family
Style	2 Storey
Status	Active

Community Information

Address	655 173 Avenue
Area	Edmonton
Subdivision	Marquis
City	Edmonton
County	ALBERTA
Province	AB
Postal Code	T5Y 4E8

Amenities

Amenities	Ceiling 9 ft., No Animal Home, No Smoking Home, Smart/Program. Thermostat, Television Connection, 9 ft. Basement Ceiling
Parking	Parking Pad Cement/Paved, Rear Drive Access

Interior

Interior Features	ensuite bathroom
Appliances	None
Heating	Forced Air-1, Natural Gas
Stories	2
Has Basement	Yes
Basement	Full, Unfinished

Exterior

Exterior	Wood, Vinyl
Exterior Features	Back Lane, Flat Site, Playground Nearby, Public Transportation, Schools, Shopping Nearby
Roof	Asphalt Shingles
Construction	Wood, Vinyl
Foundation	Concrete Perimeter

Additional Information

Date Listed June 20th, 2025

Days on Market 18

Zoning Zone 51

DATA IS DEEMED RELIABLE BUT IS NOT GUARANTEED ACCURATE BY THE REALTORS® ASSOCIATION OF EDMONTON. COPYRIGHT 2025 BY THE REALTORS® ASSOCIATION OF EDMONTON. ALL RIGHTS RESERVED. Trademarks are owned or controlled by the Canadian Real Estate Association (CREA) and identify real estate professionals who are members of CREA (REALTOR®, REALTORS®) and/or the quality of services they provide (MLS®, Multiple Listing Service®)

Listing information last updated on July 8th, 2025 at 7:47pm MDT