

\$418,800 - 10417 85 Avenue, Edmonton

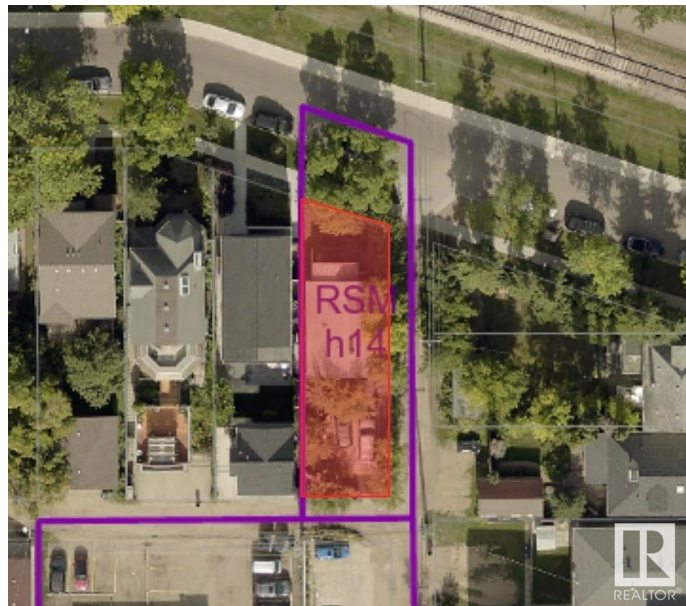
MLS® #E4449655

\$418,800

2 Bedroom, 1.50 Bathroom, 935 sqft
Single Family on 0.00 Acres

Strathcona, Edmonton, AB

RSM h14 zoning Goldmine! in Strathcona North of 82 Avenue and West of 104 Street, close to University of Alberta and Enjoy the views of Historic Streetcar!! Build up to 10-16 units on this infill lot. Existing 1927 house is tenant-occupied (providing immediate cash flow during planning). Exceptional redevelopment opportunity in established area.



Built in 1927

Essential Information

MLS® #	E4449655
Price	\$418,800
Bedrooms	2
Bathrooms	1.50
Full Baths	1
Half Baths	1
Square Footage	935
Acres	0.00
Year Built	1927
Type	Single Family
Sub-Type	Detached Single Family
Style	Bungalow
Status	Active

Community Information

Address 10417 85 Avenue

Area	Edmonton
Subdivision	Strathcona
City	Edmonton
County	ALBERTA
Province	AB
Postal Code	T6E 2K2

Amenities

Amenities	Closet Organizers
Parking	Front/Rear Drive Access

Interior

Interior Features	ensuite bathroom
Appliances	Dryer, Refrigerator, Stove-Gas, Washer
Heating	Forced Air-1, Natural Gas
Stories	1
Has Basement	Yes
Basement	Full, Partially Finished

Exterior

Exterior	Wood, Stucco
Exterior Features	Back Lane
Roof	Asphalt Shingles
Construction	Wood, Stucco
Foundation	Concrete Perimeter

Additional Information

Date Listed	July 25th, 2025
Days on Market	25
Zoning	Zone 15

DATA IS DEEMED RELIABLE BUT IS NOT GUARANTEED ACCURATE BY THE REALTORS® ASSOCIATION OF EDMONTON. COPYRIGHT 2025 BY THE REALTORS® ASSOCIATION OF EDMONTON. ALL RIGHTS RESERVED. Trademarks are owned or controlled by the Canadian Real Estate Association (CREA) and identify real estate professionals who are members of CREA (REALTOR®, REALTORS®) and/or the quality of services they provide (MLS®, Multiple Listing Service®)

Listing information last updated on August 19th, 2025 at 4:17pm MDT