

Courtesy Of Rod F Thompson Of Method Realty

# \$189,500 - 1403 9808 103 Street, Edmonton

MLS® #E4449935

**\$189,500**

2 Bedroom, 2.00 Bathroom, 1,142 sqft  
Condo / Townhouse on 0.00 Acres

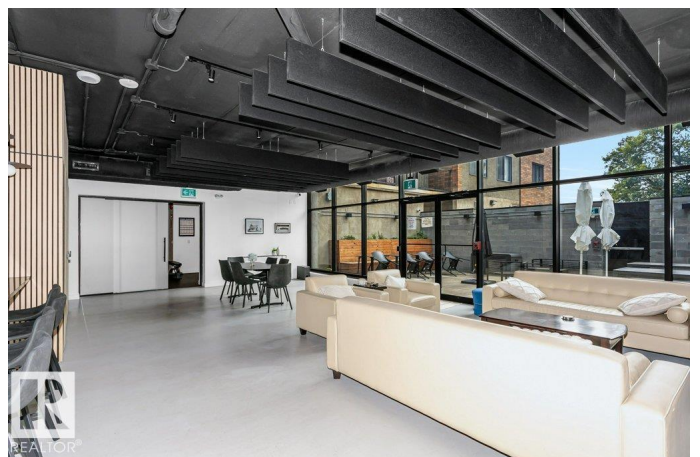
Downtown (Edmonton), Edmonton, AB

AMAZING RIVER and CITY VIEWS ~ BEST FITNESS CENTER and SOCIAL ROOM in this SEGMENT - Sitting high on the hill leading to downtown sits the Horizon. This almost 1200sqft home situated on the 14th floor comes with insane views of the river valley and city, but you feel much higher based on how the building sits high on the hill. Outside on the deck feels amazing whether or not the sun is shining, mornings are exceptionally wonderful as the large windows flood the home with natural light. The 2 bedrooms sit on the east side and they get tons of natural light all day long, making this homes energy hard to match. Did I mention the views! This home is exceptionally well cared for, and its shows the moment you step in. The Horizon itself has undergone some seriously impressive upgrades. The common areas are likely some of the finest in the city. From the main lobby to the professional quality gym, to the quiet area reserved for study. Renos include appliance, AC and lighting. WELCOME HOME!

Built in 1975

## Essential Information

MLS® #	E4449935
Price	\$189,500
Bedrooms	2



Bathrooms	2.00
Full Baths	2
Square Footage	1,142
Acres	0.00
Year Built	1975
Type	Condo / Townhouse
Sub-Type	Apartment High Rise
Style	Single Level Apartment
Status	Active

### Community Information

Address	1403 9808 103 Street
Area	Edmonton
Subdivision	Downtown (Edmonton)
City	Edmonton
County	ALBERTA
Province	AB
Postal Code	T5K 2G4

### Amenities

Amenities	Exercise Room, Parking-Visitor, Party Room
Parking	Underground

### Interior

Interior Features	ensuite bathroom
Appliances	Dishwasher-Built-In, Dryer, Oven-Microwave, Refrigerator, Stove-Electric, Washer
Heating	Baseboard, Hot Water, Natural Gas
# of Stories	17
Stories	1
Has Basement	Yes
Basement	None, No Basement

### Exterior

Exterior	Concrete, Brick
Exterior Features	Golf Nearby, Landscaped, Public Transportation, Ravine View, River Valley View
Roof	Tar & Gravel
Construction	Concrete, Brick

Foundation            Concrete Perimeter

**Additional Information**

Date Listed            July 26th, 2025

Days on Market      85

Zoning                Zone 12

Condo Fee            \$900

DATA IS DEEMED RELIABLE BUT IS NOT GUARANTEED ACCURATE BY THE REALTORS® ASSOCIATION OF EDMONTON. COPYRIGHT 2025 BY THE REALTORS® ASSOCIATION OF EDMONTON. ALL RIGHTS RESERVED. Trademarks are owned or controlled by the Canadian Real Estate Association (CREA) and identify real estate professionals who are members of CREA (REALTOR®, REALTORS®) and/or the quality of services they provide (MLS®, Multiple Listing Service®)

Listing information last updated on October 19th, 2025 at 2:17pm MDT