

\$469,649 - N/A, Edmonton

MLS® #E4453540

\$469,649

4 Bedroom, 2.00 Bathroom, 944 sqft

Single Family on 0.00 Acres

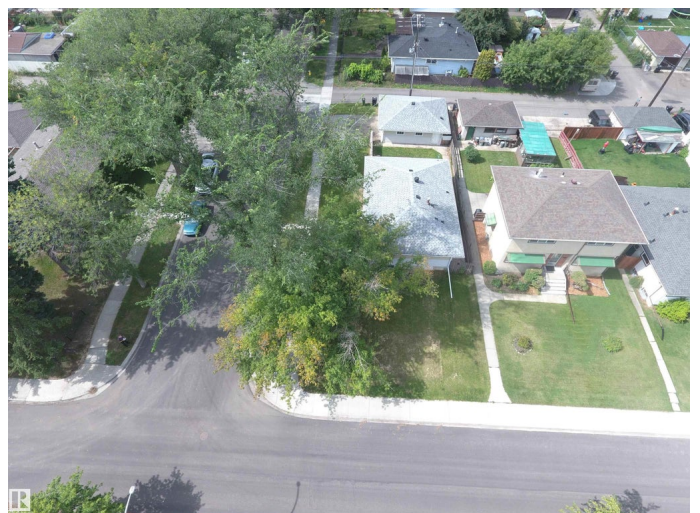
King Edward Park, Edmonton, AB

Great location in King Edward Park. 46.7x120 corner lot with. This 948 sqft family home including a fully finished basement, oversized double detached garage is located on a 5600sqft corner lot surrounded by trees! Entering the home to your left is the large living room with new south and west facing windows, (new windows through the home in 2013). From the living room step into the breakfast nook/dining area which is open to the new bright kitchen; beautiful cabinets. Continue down the hallway to the large primary bedroom, 2nd bedroom and 4 piece bathroom to complete the main floor. Walk downstairs into the fully finished basement with second kitchen, large family room, 4piece bathroom and 2 bedrooms. Great opportunity for first time buyer or revenue property with future development!

Built in 1955

Essential Information

MLS® #	E4453540
Price	\$469,649
Bedrooms	4
Bathrooms	2.00
Full Baths	2
Square Footage	944
Acres	0.00



Year Built	1955
Type	Single Family
Sub-Type	Detached Single Family
Style	Bungalow
Status	Active

Community Information

Address	N/A
Area	Edmonton
Subdivision	King Edward Park
City	Edmonton
County	ALBERTA
Province	AB
Postal Code	T6C 0K5

Amenities

Amenities	Carbon Monoxide Detectors, Detectors Smoke, No Smoking Home, Vinyl Windows
Parking	Double Garage Detached, Over Sized

Interior

Appliances	Dryer, Hood Fan, Microwave Hood Fan, Washer, Refrigerators-Two, Stoves-Two, Dishwasher-Two
Heating	Forced Air-1, Natural Gas
Stories	2
Has Basement	Yes
Basement	Full, Finished

Exterior

Exterior	Wood, Stucco
Exterior Features	Back Lane, Corner Lot, Fenced, Golf Nearby, Landscaped, Paved Lane, Playground Nearby, Public Swimming Pool, Public Transportation, Schools
Roof	Asphalt Shingles
Construction	Wood, Stucco
Foundation	Concrete Perimeter

School Information

Middle	Kenilworth/Picard
High	Mcnally

Additional Information

Date Listed August 18th, 2025
Days on Market 1
Zoning Zone 17

DATA IS DEEMED RELIABLE BUT IS NOT GUARANTEED ACCURATE BY THE REALTORS® ASSOCIATION OF EDMONTON. COPYRIGHT 2025 BY THE REALTORS® ASSOCIATION OF EDMONTON. ALL RIGHTS RESERVED.Trademarks are owned or controlled by the Canadian Real Estate Association (CREA) and identify real estate professionals who are members of CREA (REALTOR®, REALTORS®) and/or the quality of services they provide (MLS®, Multiple Listing Service®)
Listing information last updated on August 18th, 2025 at 10:47pm MDT