

## **\$314,900 - 89 230 Edwards Drive, Edmonton**

MLS® #E4454232

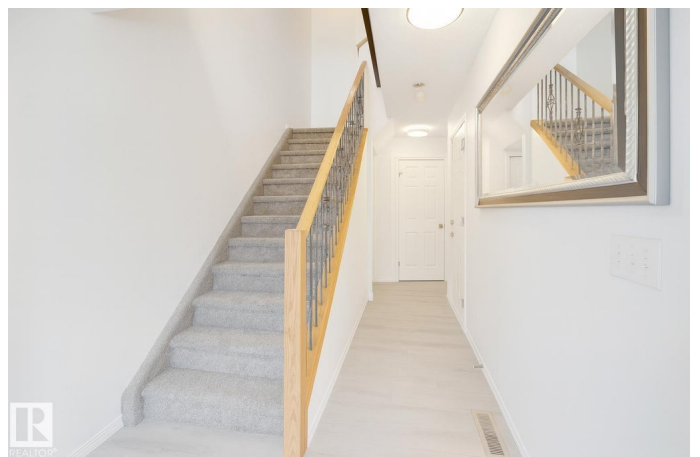
**\$314,900**

3 Bedroom, 2.50 Bathroom, 1,198 sqft

Condo / Townhouse on 0.00 Acres

Ellerslie, Edmonton, AB

Spacious Updated Townhouse with Modern Finishes & Great Location. Step inside to a bright foyer with direct access to the attached garage—deep enough to fit a truck—plus a convenient half bath, pantry, and extra storage space. This home has been beautifully updated with NEW FLOORING, NEW CARPETS, and FRESH PAINT throughout, giving it a clean and modern feel. The open-concept main floor is designed for comfort and entertaining, featuring a large kitchen with abundant cabinetry and generous counter space for all your cooking needs. The dining area easily accommodates a full-sized family table and opens through patio doors to the backyard—perfect for summer BBQs. The living room is flooded with natural light from oversized windows. Upstairs, you’ll find two massive bedrooms, each with large closets. The owner’s suite includes a private 4-piece ensuite, while another full bathroom completes this level. The FULLY FINISHED BSMT adds even more living space with a third bedroom, laundry, and plenty of storage.



Built in 2003

### **Essential Information**

MLS® # E4454232

Price \$314,900

Bedrooms	3
Bathrooms	2.50
Full Baths	2
Half Baths	1
Square Footage	1,198
Acres	0.00
Year Built	2003
Type	Condo / Townhouse
Sub-Type	Townhouse
Style	2 Storey
Status	Active

### Community Information

Address	89 230 Edwards Drive
Area	Edmonton
Subdivision	Ellerslie
City	Edmonton
County	ALBERTA
Province	AB
Postal Code	T6X 1G7

### Amenities

Amenities	No Smoking Home, See Remarks
Parking	Single Garage Attached

### Interior

Interior Features	ensuite bathroom
Appliances	Dishwasher-Built-In, Dryer, Hood Fan, Refrigerator, Stove-Countertop Electric, Washer
Heating	Forced Air-1, Natural Gas
Stories	3
Has Basement	Yes
Basement	Full, Finished

### Exterior

Exterior	Wood, Stone, Vinyl
Exterior Features	Low Maintenance Landscape, Playground Nearby, Public Transportation, Schools, Shopping Nearby
Roof	Asphalt Shingles

Construction	Wood, Stone, Vinyl
Foundation	Concrete Perimeter

**Additional Information**

Date Listed	August 22nd, 2025
Zoning	Zone 53
Condo Fee	\$348

DATA IS DEEMED RELIABLE BUT IS NOT GUARANTEED ACCURATE BY THE REALTORS® ASSOCIATION OF EDMONTON. COPYRIGHT 2025 BY THE REALTORS® ASSOCIATION OF EDMONTON. ALL RIGHTS RESERVED.Trademarks are owned or controlled by the Canadian Real Estate Association (CREA) and identify real estate professionals who are members of CREA (REALTOR®, REALTORS®) and/or the quality of services they provide (MLS®, Multiple Listing Service®)

Listing information last updated on August 22nd, 2025 at 3:47pm MDT