

\$335,000 - 802 11920 100 Avenue, Edmonton

MLS® #E4455296

\$335,000

2 Bedroom, 2.00 Bathroom, 1,204 sqft

Condo / Townhouse on 0.00 Acres

Wähkwäntäwin, Edmonton, AB

SOUTH FACING, WITH EXTENSIVE RIVERVALLEY VIEWS! Freshly painted, TURNKEY 2 Bed, 2 Bath, spacious 1200 Sq Ft 8th floor condo with a same floor storage unit! Offering, double pane windows, a large covered deck with breath taking views, an oversized TANDEM underground parking stall with tons of clearance, and FREE laundry shared with the only two other condo units on your floor. Welcome to the Fairmont! Located on Edmonton's prestigious Promenade, walking distance to Safeway, Victoria Golf Course, and Edmonton's River valley trails. With resort like amenities, this building does not disappoint. On the 19th floor, you will find a Pool, Gym, Golf net, Library, Sauna, and large South facing Deck, perfect for, watching holiday fireworks or hosting guests! Other great qualities include an on site resident manager, Bike storage, large tandem 2 car parking stall and bike locker room, This iconic Family Friendly concrete building will not last long, a MUST SEE!

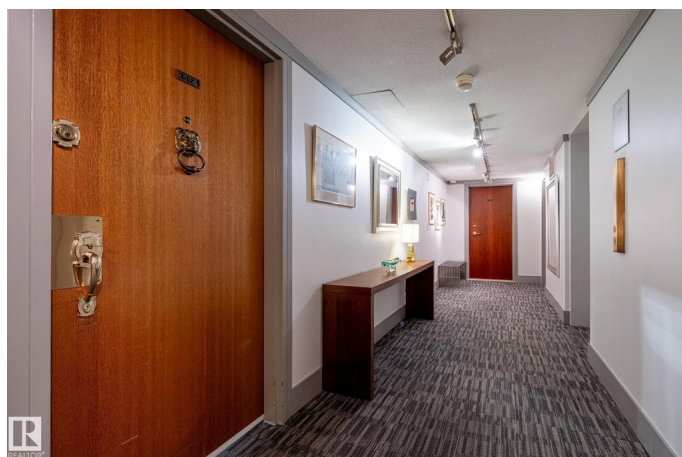
Built in 1970

Essential Information

MLS® # E4455296

Price \$335,000

Bedrooms 2



Bathrooms	2.00
Full Baths	2
Square Footage	1,204
Acres	0.00
Year Built	1970
Type	Condo / Townhouse
Sub-Type	Apartment High Rise
Style	Single Level Apartment
Status	Active

Community Information

Address	802 11920 100 Avenue
Area	Edmonton
Subdivision	W&hkw&ant&win
City	Edmonton
County	ALBERTA
Province	AB
Postal Code	T5K 0K5

Amenities

Amenities	Deck, Detectors Smoke, Intercom, No Animal Home, No Smoking Home, Parking-Visitor, Patio, Pool-Indoor, Secured Parking, Security Door, Social Rooms, Storage-Locker Room, Vinyl Windows, Storage Cage
Parking Spaces	2
Parking	Heated, Tandem, Underground
Has Pool	Yes

Interior

Interior Features	ensuite bathroom
Appliances	Compactor, Dishwasher-Built-In, Hood Fan, Refrigerator, Stove-Electric, Window Coverings
Heating	Baseboard, Natural Gas
Fireplace	Yes
Fireplaces	Insert
# of Stories	19
Stories	1
Has Basement	Yes
Basement	None, No Basement

Exterior

Exterior	Concrete, Stucco
Exterior Features	Back Lane, Landscaped, Playground Nearby, Private Setting, Ravine View, River Valley View, River View, Schools, Shopping Nearby, Treed Lot, View City, View Downtown
Roof	Flat
Construction	Concrete, Stucco
Foundation	Concrete Perimeter

Additional Information

Date Listed	August 29th, 2025
Zoning	Zone 12
Condo Fee	\$1,095

DATA IS DEEMED RELIABLE BUT IS NOT GUARANTEED ACCURATE BY THE REALTORS® ASSOCIATION OF EDMONTON. COPYRIGHT 2025 BY THE REALTORS® ASSOCIATION OF EDMONTON. ALL RIGHTS RESERVED.Trademarks are owned or controlled by the Canadian Real Estate Association (CREA) and identify real estate professionals who are members of CREA (REALTOR®, REALTORS®) and/or the quality of services they provide (MLS®, Multiple Listing Service®)

Listing information last updated on August 29th, 2025 at 9:02pm MDT