

## \$279,420 - 2419 142 Avenue, Edmonton

---

MLS® #E4455321

**\$279,420**

3 Bedroom, 1.50 Bathroom, 1,319 sqft

Condo / Townhouse on 0.00 Acres

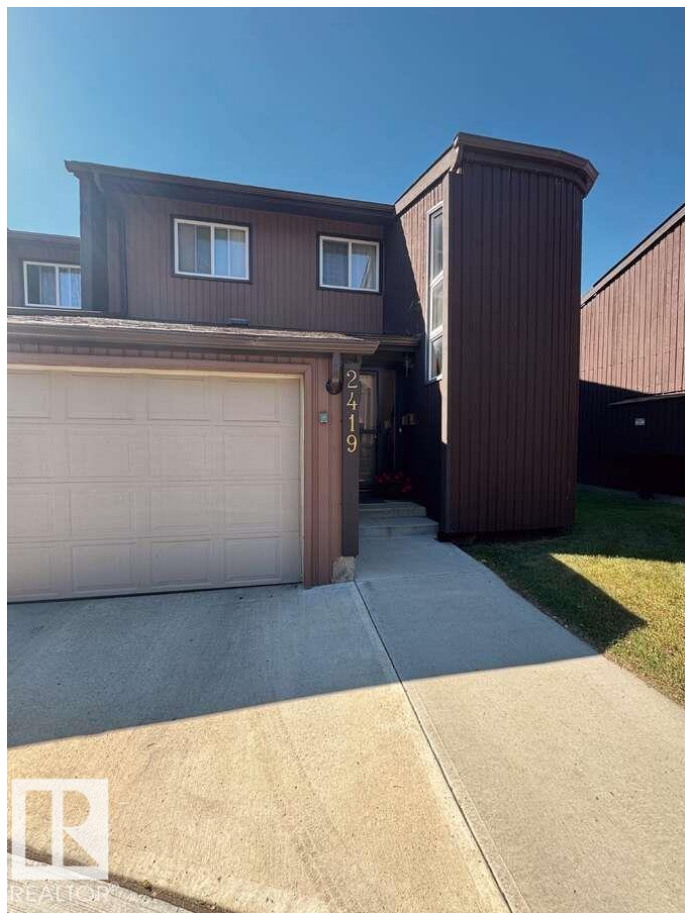
Bannerman, Edmonton, AB

For more information, please click on "View Listing on Realtor Website". Move-in ready and freshly updated! Renovated completed in 2023 with modern finishes, this 3-bed, 1.5-bath townhouse offers high end vinyl plank flooring, updated kitchen and baths, a brand new furnace (2024) with on demand hot water. Features include central vac, cozy gas fireplace, walk-in closet in the primary, and an unfinished basement with laundry, central vac and plenty of storage. Enjoy a fenced backyard, attached single garage plus visitor/street parking. Well managed complex with recent upgrades to windows, doors, road and roof, fences being replaced next and a Reserve fund. Fantastic location: steps to Hermitage Park, trails, the river valley, schools, close to the Henday and behind an elementary school with a huge field. Close to shops, groceries, and transit. Stylish, comfortable, and low-maintenance living with space to make it your own! Wired for Telus Fibre for fast streaming.

Built in 1979

### Essential Information

MLS® #	E4455321
Price	\$279,420
Bedrooms	3



Bathrooms	1.50
Full Baths	1
Half Baths	1
Square Footage	1,319
Acres	0.00
Year Built	1979
Type	Condo / Townhouse
Sub-Type	Townhouse
Style	2 Storey
Status	Active

### Community Information

Address	2419 142 Avenue
Area	Edmonton
Subdivision	Bannerman
City	Edmonton
County	ALBERTA
Province	AB
Postal Code	T5Y 1Y3

### Amenities

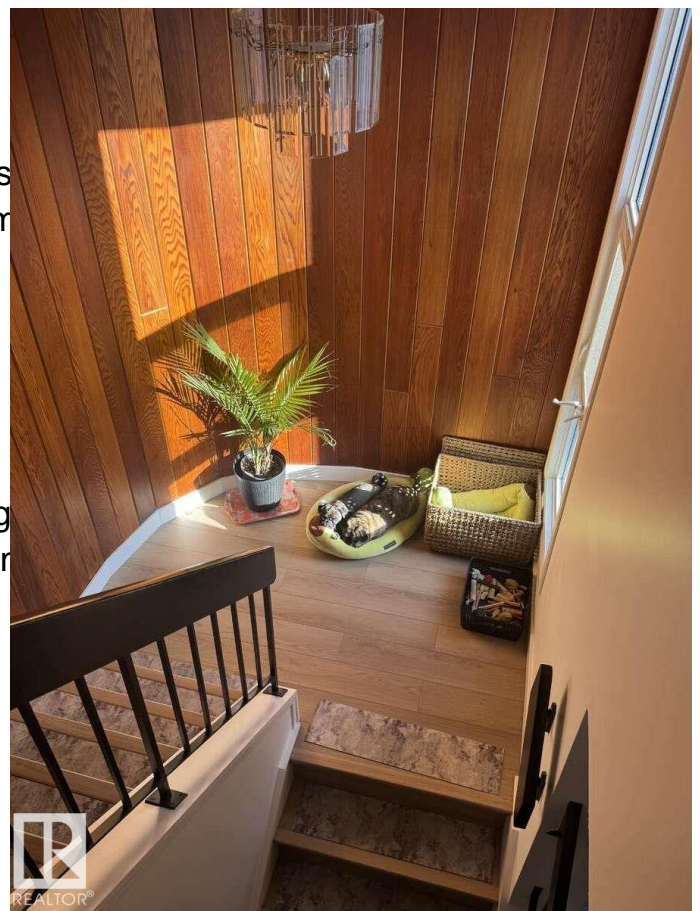
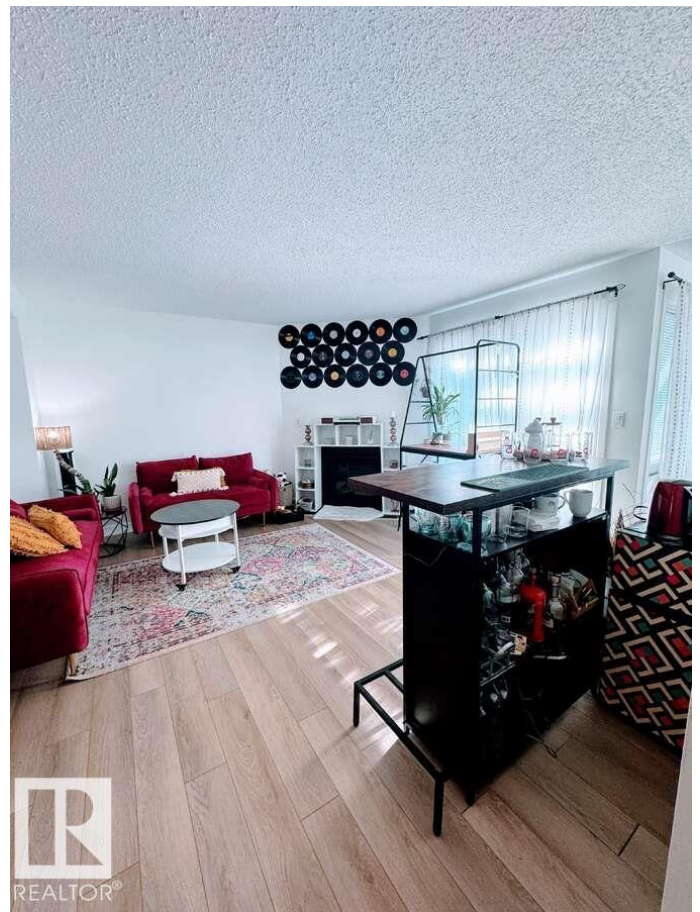
Amenities	Carbon Monoxide Detectors, Patio, Smart/Program. Therm
Parking Spaces	1
Parking	Single Garage Attached

### Interior

Appliances	Dishwasher-Built-In, Dryer, Microwave Hood Fan, Refrigerator, System Attachments, Vacuum
Heating	Forced Air-1, Natural Gas
Fireplace	Yes
Fireplaces	Insert
Stories	2
Has Basement	Yes
Basement	Full, Unfinished

### Exterior

Exterior	Wood
----------	------



Exterior Features	Fenced, Golf Nearby, Landscaped, Playground Nearby, Public Transportation, Shopping Nearby, Ski Hill Nearby, Treed Lot
Roof	Asphalt Shingles
Construction	Wood
Foundation	Concrete Perimeter

**Additional Information**

Date Listed	August 29th, 2025
Zoning	Zone 35
Condo Fee	\$501

DATA IS DEEMED RELIABLE BUT IS NOT GUARANTEED ACCURATE BY THE REALTORS® ASSOCIATION OF EDMONTON. COPYRIGHT 2025 BY THE REALTORS® ASSOCIATION OF EDMONTON. ALL RIGHTS RESERVED.Trademarks are owned or controlled by the Canadian Real Estate Association (CREA) and identify real estate professionals who are members of CREA (REALTOR®, REALTORS®) and/or the quality of services they provide (MLS®, Multiple Listing Service®)

Listing information last updated on August 29th, 2025 at 9:17pm MDT