

\$199,900 - 210 13111 140 Avenue, Edmonton

MLS® #E4456492

\$199,900

2 Bedroom, 2.00 Bathroom, 1,023 sqft
Condo / Townhouse on 0.00 Acres

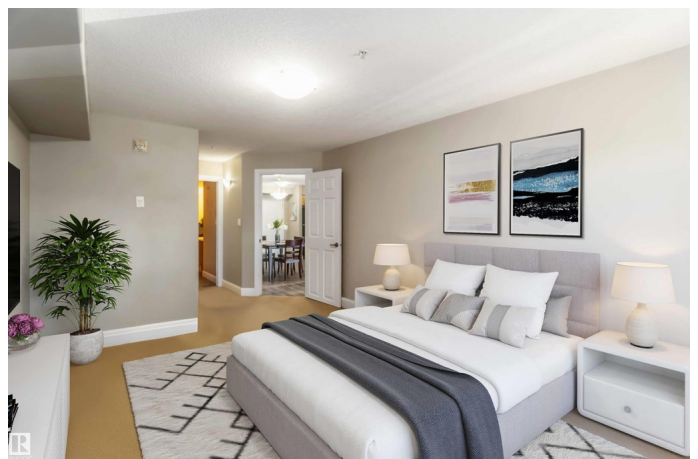
Pembina, Edmonton, AB

This 2-bedroom, 2-bathroom condo is the lowest-priced unit in the building! Offers incredible value! Featuring a functional open-concept layout with crown mouldings, California knockdown ceilings, and a low-maintenance deck, this home blends style and practicality. The spacious kitchen boasts rich maple cabinetry, black appliances, a breakfast bar, and a dedicated dining area. The living room is upgraded with laminate flooring, while the bedrooms feature cozy wool carpets. The primary suite comfortably fits a king bed and includes a walk-in closet plus a luxurious 5-piece ensuite. A second bedroom and full bath add versatility for family, guests, or a home office. With southwest-facing exposure for plenty of natural light, in-suite laundry, heated underground parking, and a storage cageâ€”all in a pet-friendly, professionally managed building near every amenityâ€”this one is a standout.

Built in 2005

Essential Information

MLS® #	E4456492
Price	\$199,900
Bedrooms	2
Bathrooms	2.00
Full Baths	2



Square Footage	1,023
Acres	0.00
Year Built	2005
Type	Condo / Townhouse
Sub-Type	Lowrise Apartment
Style	Single Level Apartment
Status	Active

Community Information

Address	210 13111 140 Avenue
Area	Edmonton
Subdivision	Pembina
City	Edmonton
County	ALBERTA
Province	AB
Postal Code	T6V 0B1

Amenities

Amenities	Detectors Smoke, No Animal Home, Parking-Visitor, Secured Parking
Parking Spaces	1
Parking	Underground

Interior

Interior Features	ensuite bathroom
Appliances	Dishwasher-Built-In, Dryer, Intercom, Microwave Hood Fan, Refrigerator, Stacked Washer/Dryer, Stove-Electric, Washer, Window Coverings
Heating	Fan Coil, Natural Gas
# of Stories	4
Stories	4
Has Basement	Yes
Basement	None, No Basement

Exterior

Exterior	Wood, Stucco
Exterior Features	Low Maintenance Landscape, Paved Lane, Schools, Shopping Nearby
Roof	Asphalt Shingles
Construction	Wood, Stucco
Foundation	Concrete Perimeter

Additional Information

Date Listed	September 5th, 2025
Days on Market	1
Zoning	Zone 27
Condo Fee	\$485

DATA IS DEEMED RELIABLE BUT IS NOT GUARANTEED ACCURATE BY THE REALTORS® ASSOCIATION OF EDMONTON. COPYRIGHT 2025 BY THE REALTORS® ASSOCIATION OF EDMONTON. ALL RIGHTS RESERVED. Trademarks are owned or controlled by the Canadian Real Estate Association (CREA) and identify real estate professionals who are members of CREA (REALTOR®, REALTORS®) and/or the quality of services they provide (MLS®, Multiple Listing Service®)

Listing information last updated on September 6th, 2025 at 4:47pm MDT