

\$219,900 - 163 11517 Ellerslie Road, Edmonton

MLS® #E4456778

\$219,900

2 Bedroom, 2.00 Bathroom, 914 sqft
Condo / Townhouse on 0.00 Acres

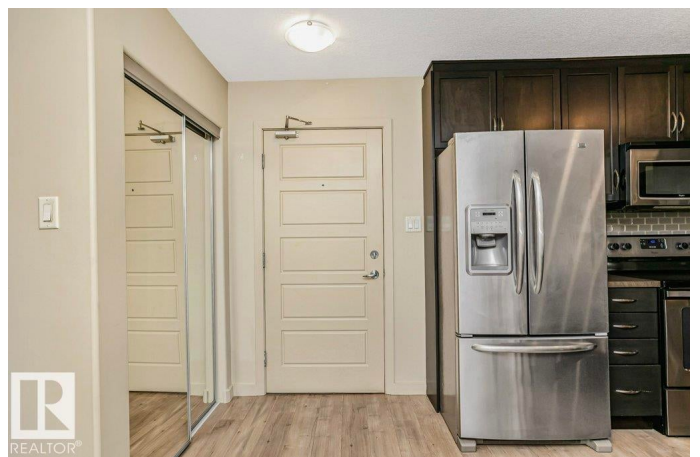
Rutherford (Edmonton), Edmonton, AB

This beautiful 2 bed 2 full bath condo in Rutherford on the main floor features 2 spacious bedrooms with large walk-in closets, open kitchen with new appliances, new carpets in both bedrooms, in suite laundry room with extra storage and secluded patio with natural gas line for BBQ. It includes great amenities like the fitness center, social room, guest suite that can be rented daily for \$50 or weekly for \$250 and visitor parking. 1 titled heated underground parking stall and storage cage. There is a stairwell to parkade adjacent to the unit and also a side entrance to parking lot. Only one neighboring unit making for a quiet primary bedroom. In a prime location close to South Edmonton Common, walking distance to public transportation, banks, shopping and coffee shops. Easy access to major traffic routes and a short distance to Edmonton International Airport. This unit is in move-in condition with a quick possession possible.

Built in 2011

Essential Information

MLS® #	E4456778
Price	\$219,900
Bedrooms	2
Bathrooms	2.00



Full Baths	2
Square Footage	914
Acres	0.00
Year Built	2011
Type	Condo / Townhouse
Sub-Type	Lowrise Apartment
Style	Single Level Apartment
Status	Active

Community Information

Address	163 11517 Ellerslie Road
Area	Edmonton
Subdivision	Rutherford (Edmonton)
City	Edmonton
County	ALBERTA
Province	AB
Postal Code	T6W 2A9

Amenities

Amenities	Closet Organizers, Exercise Room, Guest Suite, Secured Parking, Social Rooms, Vinyl Windows, Storage Cage, Natural Gas BBQ Hookup
Parking Spaces	1
Parking	Heated, Single Indoor, Underground

Interior

Interior Features	ensuite bathroom
Appliances	Dishwasher-Built-In, Dryer, Garage Control, Garburator, Microwave Hood Fan, Refrigerator, Stove-Electric, Washer, Window Coverings
Heating	Hot Water, Natural Gas
# of Stories	4
Stories	1
Has Basement	Yes
Basement	None, No Basement

Exterior

Exterior	Wood, Composition, Stone
Exterior Features	Airport Nearby, Golf Nearby, Playground Nearby, Public Swimming Pool, Public Transportation, Schools, Shopping Nearby
Roof	Asphalt Shingles

Construction Wood, Composition, Stone
Foundation Concrete Perimeter

Additional Information

Date Listed September 6th, 2025

Days on Market 64

Zoning Zone 55

Condo Fee \$534

DATA IS DEEMED RELIABLE BUT IS NOT GUARANTEED ACCURATE BY THE REALTORS® ASSOCIATION OF EDMONTON. COPYRIGHT 2025 BY THE REALTORS® ASSOCIATION OF EDMONTON. ALL RIGHTS RESERVED. Trademarks are owned or controlled by the Canadian Real Estate Association (CREA) and identify real estate professionals who are members of CREA (REALTOR®, REALTORS®) and/or the quality of services they provide (MLS®, Multiple Listing Service®)

Listing information last updated on November 9th, 2025 at 8:32am MST