

\$689,900 - 3 Horizon Link, Spruce Grove

MLS® #E4457325

\$689,900

3 Bedroom, 2.50 Bathroom, 2,390 sqft

Single Family on 0.00 Acres

Hilldowns, Spruce Grove, AB

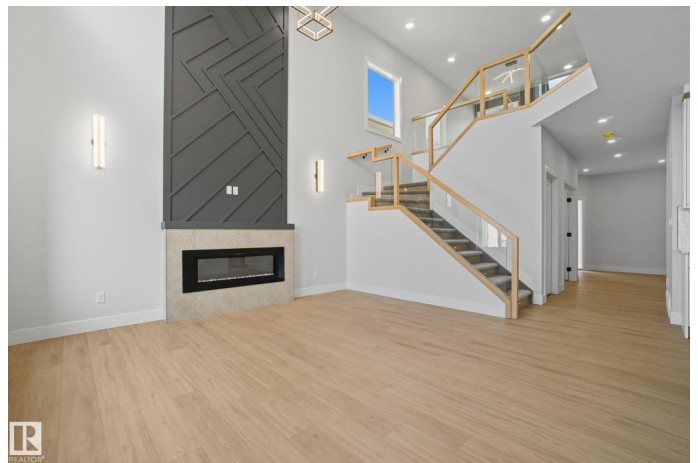
Designer finishes and fully upgraded SunnyView Home-2389sqft. The main floor features an office, 2-pc powder room with an elegant tiled feature wall. The living room boasts an open to below design, a central electric fireplace and a custom feature wall extending to the ceiling. The chef's kitchen features 2-toned ceiling height cabinetry that extend into the nook, under cabinet lighting, a central island with waterfall quartz countertop, built in garbage organizer and SS appliances. A modern staircase with step lighting and glass railing connects the floors in style, leading to a spacious bonus room. The primary suite includes a spa-inspired 5-pc ensuite with a custom shower, jacuzzi and a walk-in closet. Two additional generously-sized bedrooms share a 4-pc bath. O/S dble attached garage and large driveway. SEPARATE SIDE entrance to the bsmt. Customized high quality finishes w/ premium lighting, 3 gas lines, upgraded flooring, coffered ceilings, rough-in for central vacuum, plus much more. A must see!

Built in 2025

Essential Information

MLS® # E4457325

Price \$689,900



Bedrooms	3
Bathrooms	2.50
Full Baths	2
Half Baths	1
Square Footage	2,390
Acres	0.00
Year Built	2025
Type	Single Family
Sub-Type	Detached Single Family
Style	2 Storey
Status	Active

Community Information

Address	3 Horizon Link
Area	Spruce Grove
Subdivision	Hilldowns
City	Spruce Grove
County	ALBERTA
Province	AB
Postal Code	T7X 0X5

Amenities

Amenities	Ceiling 10 ft., Ceiling 9 ft.
Parking	Double Garage Attached

Interior

Interior Features	ensuite bathroom
Appliances	Dishwasher-Built-In, Garage Control, Garage Opener, Hood Fan, Oven-Built-In, Oven-Microwave, Refrigerator, Stove-Countertop Gas
Heating	Forced Air-1, Natural Gas
Fireplace	Yes
Fireplaces	Remote Control, Wall Mount
Stories	2
Has Basement	Yes
Basement	Full, Unfinished

Exterior

Exterior	Wood, Stone, Vinyl
Exterior Features	Golf Nearby, Picnic Area, Playground Nearby, Schools, Shopping

	Nearby
Roof	Asphalt Shingles
Construction	Wood, Stone, Vinyl
Foundation	Concrete Perimeter

Additional Information

Date Listed	September 11th, 2025
Days on Market	2
Zoning	Zone 91

DATA IS DEEMED RELIABLE BUT IS NOT GUARANTEED ACCURATE BY THE REALTORS® ASSOCIATION OF EDMONTON. COPYRIGHT 2025 BY THE REALTORS® ASSOCIATION OF EDMONTON. ALL RIGHTS RESERVED. Trademarks are owned or controlled by the Canadian Real Estate Association (CREA) and identify real estate professionals who are members of CREA (REALTOR®, REALTORS®) and/or the quality of services they provide (MLS®, Multiple Listing Service®)

Listing information last updated on September 13th, 2025 at 3:17pm MDT