

\$599,800 - 10 Blueberry Crescent, Sherwood Park

MLS® #E4457359

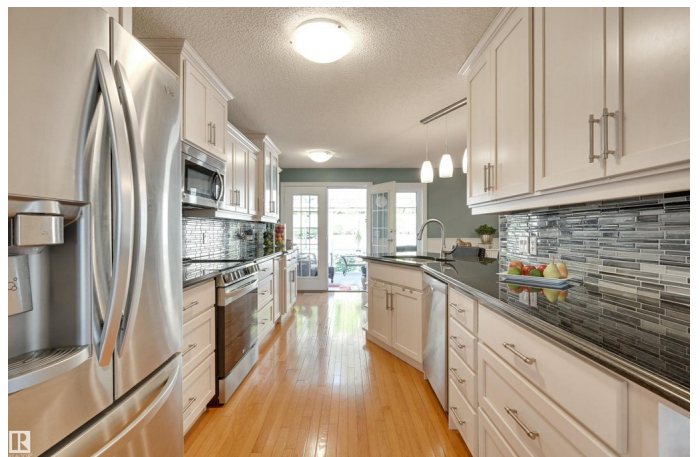
\$599,800

4 Bedroom, 3.00 Bathroom, 1,517 sqft

Single Family on 0.00 Acres

Clarkdale Meadows, Sherwood Park, AB

Welcome home to this IMMACULATE, RENOVATED 1517 sq.ft. BUNGALOW located in a private CUL-DE-SAC close to parks, schools, trails & quick access to shopping, restaurants & coffee shops. A total of 4 bedrooms & 3 bathrooms. The main floor has a spacious living room, gourmet kitchen w updated light color wood cabinetry, plenty of storage, soft close drawers, S/S appliances, pantry & granite counters. The dining room has a gas fireplace & hardwood flooring in the kitchen & dining room. Enjoy the 3 SEASON SUN ROOM off the kitchen overlooking the BEAUTIFULLY LANDSCAPED fenced SOUTHWEST FACING YARD. 4 piece bathroom across from the 2nd/3rd bedroom that was converted to a large den/bedroom. The primary suite has 2 walk-in closets & a 3 piece ensuite. Lower level has a family room w a gas fireplace, 2 bedrooms with walk-in closets, 3 piece bathroom, extra storage & laundry. Laundry hook-ups are on the main floor as well. 20x22 HEATED DOUBLE ATTACHED GARAGE w EPOXY FLOORING. A/C. Shows very well!



Built in 1991

Essential Information

MLS® # E4457359

Price \$599,800

Bedrooms	4
Bathrooms	3.00
Full Baths	3
Square Footage	1,517
Acres	0.00
Year Built	1991
Type	Single Family
Sub-Type	Detached Single Family
Style	Bungalow
Status	Active

Community Information

Address	10 Blueberry Crescent
Area	Sherwood Park
Subdivision	Clarkdale Meadows
City	Sherwood Park
County	ALBERTA
Province	AB
Postal Code	T8H 1P6

Amenities

Amenities	Air Conditioner, Deck, Sunroom
Parking Spaces	4
Parking	Double Garage Attached, Heated

Interior

Interior Features	ensuite bathroom
Appliances	Air Conditioning-Central, Dishwasher-Built-In, Dryer, Freezer, Microwave Hood Fan, Refrigerator, Storage Shed, Stove-Electric, Washer, Water Softener, Window Coverings, Garage Heater
Heating	Forced Air-1, Natural Gas
Fireplace	Yes
Fireplaces	Corner, Mantel
Stories	2
Has Basement	Yes
Basement	Full, Finished

Exterior

Exterior	Wood, Stone, Vinyl
----------	--------------------

Exterior Features	Cul-De-Sac, Fenced, Golf Nearby, Landscaped, Playground Nearby, Private Setting, Schools, Shopping Nearby
Roof	Asphalt Shingles
Construction	Wood, Stone, Vinyl
Foundation	Concrete Perimeter

Additional Information

Date Listed	September 11th, 2025
Days on Market	2
Zoning	Zone 25

DATA IS DEEMED RELIABLE BUT IS NOT GUARANTEED ACCURATE BY THE REALTORS® ASSOCIATION OF EDMONTON. COPYRIGHT 2025 BY THE REALTORS® ASSOCIATION OF EDMONTON. ALL RIGHTS RESERVED.Trademarks are owned or controlled by the Canadian Real Estate Association (CREA) and identify real estate professionals who are members of CREA (REALTOR®, REALTORS®) and/or the quality of services they provide (MLS®, Multiple Listing Service®)

Listing information last updated on September 13th, 2025 at 7:17pm MDT