

\$5,250,000 - 28 Riverside Crescent, Edmonton

MLS® #E4457450

\$5,250,000

6 Bedroom, 6.00 Bathroom, 5,873 sqft
Single Family on 0.00 Acres

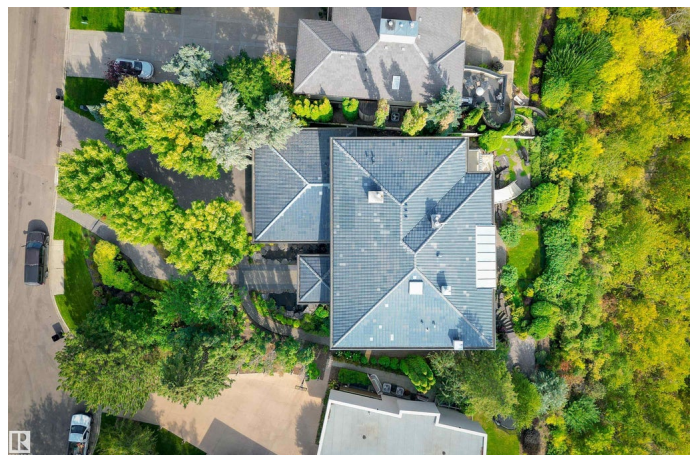
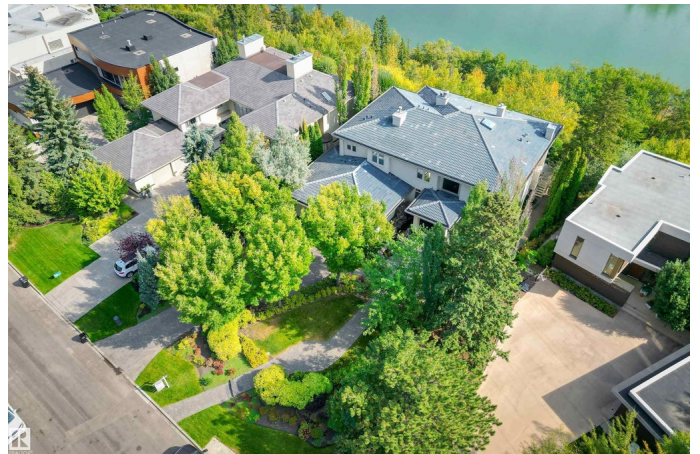
Crestwood, Edmonton, AB

This iconic Crestwood home boasts a stunning panoramic view of our river valley and downtown. Architecturally designed, built in 2001 with an extensive million dollar remodeling completed in 2011 for a contemporary masterpiece. Featuring 5 bdrms, 7 baths, 2 fireplaces, 10 ft ceilings, theatre room, in floor heating, nanny suite & walk out basement. The location is incredible, perched right on the river valley in a quiet, prestigious crescent. Beautifully landscaped by architect Doug Carlyle includes a waterfall feature greeting visitors. Flooded with natural light, the home feels welcoming, not pretentious. Every room is perfectly sized and enjoys lovely sight lines to take advantage of the view and the privacy. Entertaining sized dining room and dream kitchen by Heart Kitchens. Unbelievable dressing room off the primary bedroom must be seen! Excellent schools, great restaurants, coffee shops, grocery all within an easy walk. Lot is approx. 75" X 193". Truly one of Edmonton's finest residences.

Built in 2001

Essential Information

MLS® #	E4457450
Price	\$5,250,000
Lease Rate	\$23



Bedrooms	6
Bathrooms	6.00
Full Baths	5
Half Baths	2
Square Footage	5,873
Acres	0.00
Year Built	2001
Type	Single Family
Sub-Type	Detached Single Family
Style	2 Storey
Status	Active

Community Information

Address	28 Riverside Crescent
Area	Edmonton
Subdivision	Crestwood
City	Edmonton
County	ALBERTA
Province	AB
Postal Code	T5N 3M5

Amenities

Amenities	Air Conditioner, Ceiling 10 ft., Ceiling 9 ft., Closet Organizers, Sprinkler Sys-Underground, Walkout Basement, See Remarks
Parking Spaces	3
Parking	Triple Garage Attached

Interior

Interior Features	ensuite bathroom
Appliances	Freezer, Garage Control, Garage Opener, Oven-Microwave, Stove-Countertop Gas, Window Coverings, Wine/Beverage Cooler, Dryer-Two, Refrigerators-Two, Washers-Two, Dishwasher-Two, Oven Built-In-Two
Heating	Forced Air-2, Hot Water, Natural Gas
Fireplace	Yes
Fireplaces	Mantel, See Remarks
Stories	3
Has Basement	Yes
Basement	Full, Finished

Exterior

Exterior	Wood, Stucco
Exterior Features	Ravine View, River Valley View, View Downtown, See Remarks
Roof	Concrete Tiles
Construction	Wood, Stucco
Foundation	Concrete Perimeter

School Information

Elementary	Crestwood School, St. Paul
Middle	Crestwood School
High	Ross Shep, Mac High,FX,JP

Additional Information

Date Listed	September 12th, 2025
Days on Market	53
Zoning	Zone 10

DATA IS DEEMED RELIABLE BUT IS NOT GUARANTEED ACCURATE BY THE REALTORS® ASSOCIATION OF EDMONTON. COPYRIGHT 2025 BY THE REALTORS® ASSOCIATION OF EDMONTON. ALL RIGHTS RESERVED. Trademarks are owned or controlled by the Canadian Real Estate Association (CREA) and identify real estate professionals who are members of CREA (REALTOR®, REALTORS®) and/or the quality of services they provide (MLS®, Multiple Listing Service®)

Listing information last updated on November 4th, 2025 at 4:02am MST