

\$489,900 - 9836 226 Street, Edmonton

MLS® #E4460010

\$489,900

3 Bedroom, 3.50 Bathroom, 1,167 sqft

Single Family on 0.00 Acres

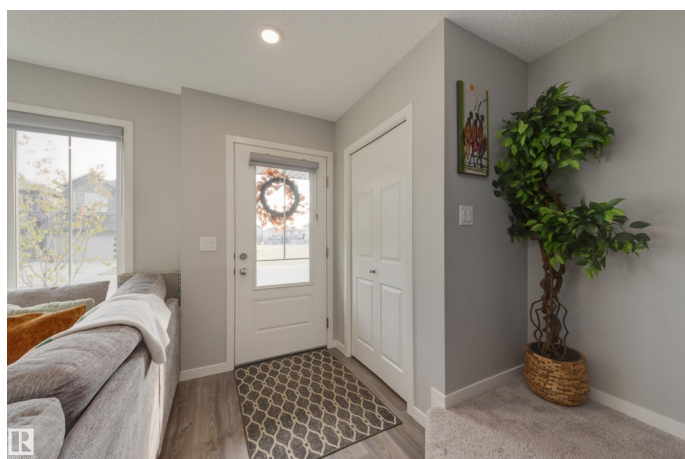
Secord, Edmonton, AB

Superb Secord property - close to great schools, shopping and amenities! There is a recreation center being built in the area that will add future value to this charming property. Two story with double detached garage is fully developed and offers four bathrooms total! The main floor has luxury vinyl plank flooring; great room and dining area flow together seamlessly; and the perfectly designed kitchen has an island, quartz counter tops, stainless steel appliances; lots of cabinets including a pantry. There is a two pce here for convenience. The upper floor has three spacious bedrooms including the primary suite with a full ensuite and walk-in closet. A second full bath is on this level as well. The lower level has a large family room, full bath and the laundry room is located here. Lots of storage!

Built in 2022

Essential Information

| | |
|----------------|-----------|
| MLS® # | E4460010 |
| Price | \$489,900 |
| Bedrooms | 3 |
| Bathrooms | 3.50 |
| Full Baths | 3 |
| Half Baths | 1 |
| Square Footage | 1,167 |



| | |
|------------|------------------------|
| Acres | 0.00 |
| Year Built | 2022 |
| Type | Single Family |
| Sub-Type | Detached Single Family |
| Style | 2 Storey |
| Status | Active |

Community Information

| | |
|-------------|-----------------|
| Address | 9836 226 Street |
| Area | Edmonton |
| Subdivision | Secord |
| City | Edmonton |
| County | ALBERTA |
| Province | AB |
| Postal Code | T5T 7T8 |

Amenities

| | |
|-----------|------------------------|
| Amenities | See Remarks |
| Parking | Double Garage Detached |

Interior

| | |
|-------------------|---|
| Interior Features | ensuite bathroom |
| Appliances | Dishwasher-Built-In, Refrigerator, Stove-Electric |
| Heating | Forced Air-1, Natural Gas |
| Stories | 3 |
| Has Basement | Yes |
| Basement | Full, Finished |

Exterior

| | |
|-------------------|--------------------|
| Exterior | Wood, Vinyl |
| Exterior Features | Back Lane |
| Roof | Asphalt Shingles |
| Construction | Wood, Vinyl |
| Foundation | Concrete Perimeter |

Additional Information

| | |
|----------------|----------------------|
| Date Listed | September 29th, 2025 |
| Days on Market | 2 |
| Zoning | Zone 58 |

DATA IS DEEMED RELIABLE BUT IS NOT GUARANTEED ACCURATE BY THE REALTORS® ASSOCIATION OF EDMONTON. COPYRIGHT 2025 BY THE REALTORS® ASSOCIATION OF EDMONTON. ALL RIGHTS RESERVED.Trademarks are owned or controlled by the Canadian Real Estate Association (CREA) and identify real estate professionals who are members of CREA (REALTOR®, REALTORS®) and/or the quality of services they provide (MLS®, Multiple Listing Service®)

Listing information last updated on October 1st, 2025 at 5:32am MDT