

\$395,000 - 4218 121 Street, Edmonton

MLS® #E4460099

\$395,000

0 Bedroom, 0.00 Bathroom,
Single Family on 0.00 Acres

Aspen Gardens, Edmonton, AB

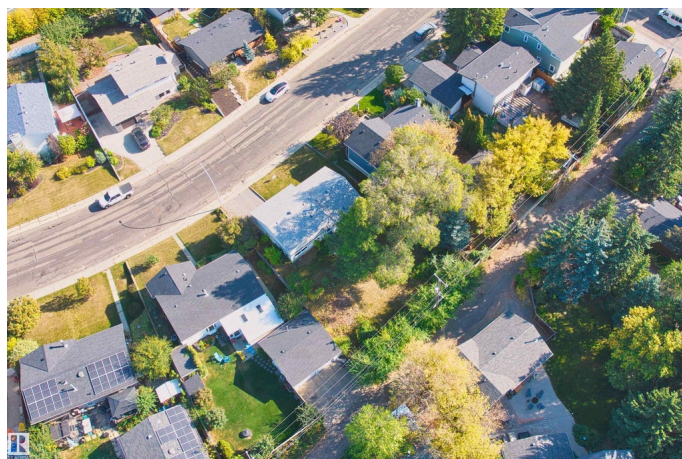
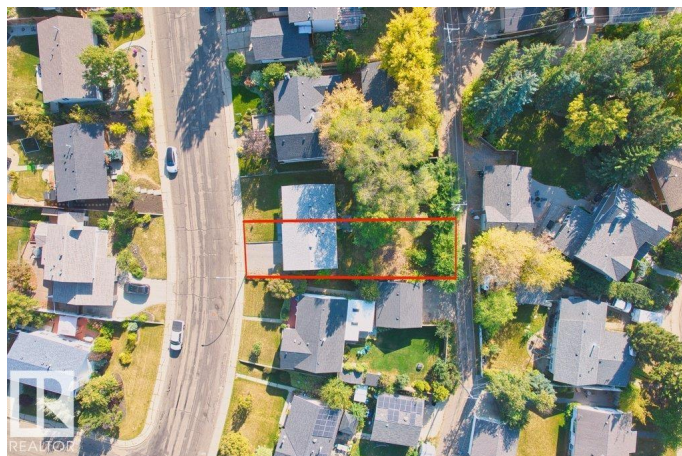
Exceptional redevelopment lot in the highly desirable Aspen Gardens community! Families will love the close proximity to top-ranked Westbrook School and Vernon Barford Junior High. This lot is just minutes from Whitemud Park, Snow Valley Ski Resort, and the Snow Valley Aerial Park, this location also offers easy access to Whitemud Creek Ravine's trails for biking, hiking, and walking. Surrounded by luxury infills and expansive green space, this beautiful lot is the perfect place to build your dream home. Opportunities like this are rare—bring your vision to life in one of Edmonton's most sought-after neighborhoods.

Essential Information

MLS® #	E4460099
Price	\$395,000
Bathrooms	0.00
Acres	0.00
Type	Single Family
Sub-Type	Vacant Lot/Land
Status	Active

Community Information

Address	4218 121 Street
Area	Edmonton



Subdivision	Aspen Gardens
City	Edmonton
County	ALBERTA
Province	AB
Postal Code	T6J 1Y8

Exterior

Exterior Features Park/Reserve, Picnic Area, Schools, Shopping Nearby

Additional Information

Date Listed	September 30th, 2025
Days on Market	1
Zoning	Zone 16

DATA IS DEEMED RELIABLE BUT IS NOT GUARANTEED ACCURATE BY THE REALTORS® ASSOCIATION OF EDMONTON. COPYRIGHT 2025 BY THE REALTORS® ASSOCIATION OF EDMONTON. ALL RIGHTS RESERVED. Trademarks are owned or controlled by the Canadian Real Estate Association (CREA) and identify real estate professionals who are members of CREA (REALTOR®, REALTORS®) and/or the quality of services they provide (MLS®, Multiple Listing Service®)

Listing information last updated on October 1st, 2025 at 5:32am MDT