

Courtesy Of David C St. Jean Of Exp Realty

\$590,250 - 2019 191 Street, Edmonton

MLS® #E4460460

\$590,250

4 Bedroom, 3.00 Bathroom, 1,995 sqft
Single Family on 0.00 Acres

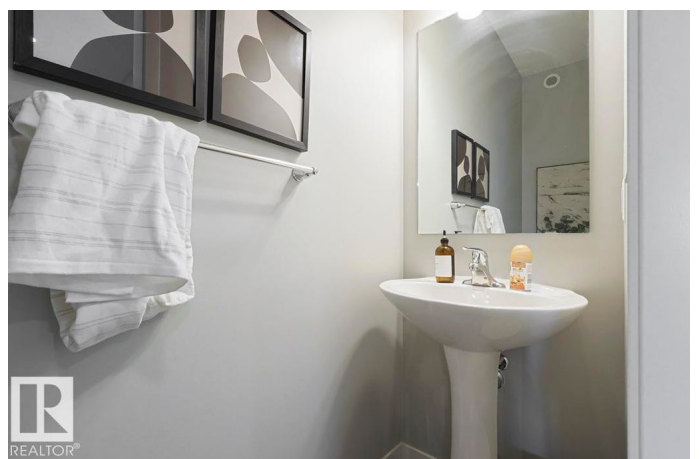
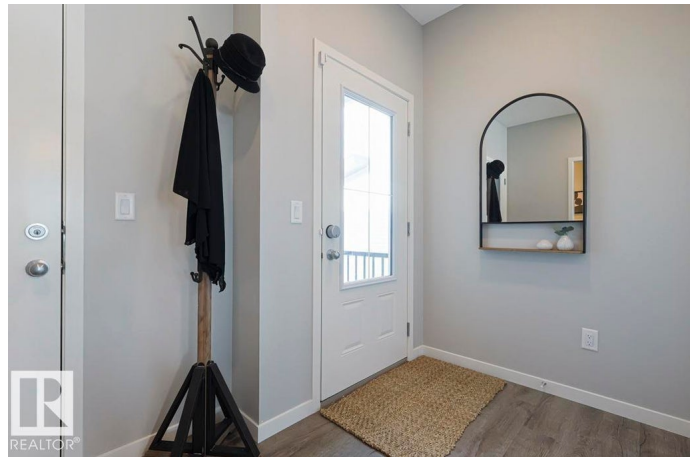
River's Edge, Edmonton, AB

The Apex is a three-bedroom home artfully designed for durability, elegance, and modern family living. It includes a double attached garage with floor drain, 9 ft ceilings on main & basement levels, separate side entrance, and Luxury Vinyl Plank flooring. The foyer leads to a full 3-piece bath with stand-up shower and a bedroom at the back. An open concept nook, great room & kitchen form the heart of the home. The kitchen features quartz countertops, an island with flush eating ledge, built-in microwave, undermount Silgranit sink, modern hood fan, ample soft-close cabinetry, and pantry. The great room with fireplace and kitchen boast large windows and a patio door to the backyard. Upstairs, the bright primary suite offers a 5-piece ensuite with double sinks, tub, and glass-door shower, plus a substantial walk-in closet. A bonus room, laundry, main 3-piece bath, and two additional bedrooms complete the level. Brushed nickel fixtures, basement rough-in, & Sterlingâ€™s new Signature Specification are included.

Built in 2025

Essential Information

MLS® #	E4460460
Price	\$590,250
Bedrooms	4



Bathrooms	3.00
Full Baths	3
Square Footage	1,995
Acres	0.00
Year Built	2025
Type	Single Family
Sub-Type	Detached Single Family
Style	2 Storey
Status	Active

Community Information

Address	2019 191 Street
Area	Edmonton
Subdivision	River's Edge
City	Edmonton
County	ALBERTA
Province	AB
Postal Code	T6M 3E8

Amenities

Amenities	Ceiling 9 ft., Detectors Smoke, No Animal Home, No Smoking Home, Smart/Program. Thermostat, Television Connection, 9 ft. Basement Ceiling
Parking	Double Garage Attached

Interior

Interior Features	ensuite bathroom
Appliances	Garage Control, Garage Opener
Heating	Forced Air-1, Natural Gas
Fireplace	Yes
Fireplaces	Mantel
Stories	2
Has Basement	Yes
Basement	Full, Unfinished

Exterior

Exterior	Wood, Vinyl
Exterior Features	No Through Road, Playground Nearby, Public Transportation, Schools, Shopping Nearby

Roof	Asphalt Shingles
Construction	Wood, Vinyl
Foundation	Concrete Perimeter

School Information

Elementary	Callingwood School
Middle	Hillcrest School
High	Jasper Place School

Additional Information

Date Listed	October 2nd, 2025
Days on Market	34
Zoning	Zone 57

DATA IS DEEMED RELIABLE BUT IS NOT GUARANTEED ACCURATE BY THE REALTORS® ASSOCIATION OF EDMONTON. COPYRIGHT 2025 BY THE REALTORS® ASSOCIATION OF EDMONTON. ALL RIGHTS RESERVED. Trademarks are owned or controlled by the Canadian Real Estate Association (CREA) and identify real estate professionals who are members of CREA (REALTOR®, REALTORS®) and/or the quality of services they provide (MLS®, Multiple Listing Service®)

Listing information last updated on November 5th, 2025 at 3:17am MST