

\$307,000 - 25 9903 209 Street, Edmonton

MLS® #E4461456

\$307,000

0 Bedroom, 0.00 Bathroom,
Industrial on 0.00 Acres

Lewis Farms Industrial, Edmonton, AB

Perfect opportunity to grow your business or expand space at Lewis Farms Industrial. Situated near Anthony Henday & 16A for easy access, this single bay, 1426 sq. ft. space is ideal for a small business or storage space. Features include; 400 sq. ft. Mezzanine level, 100 amp electrical service, forced air heated, 12'x14' overhead door, full sprinkler system, and secured complex for added security and peace of mind. Access to the clubhouse provides washroom facility & amenities for convenience. Monthly condo fee (\$307) includes; power, gas, waste, site maintenance & reserve fund. Excellent value for a clean & well maintained property!

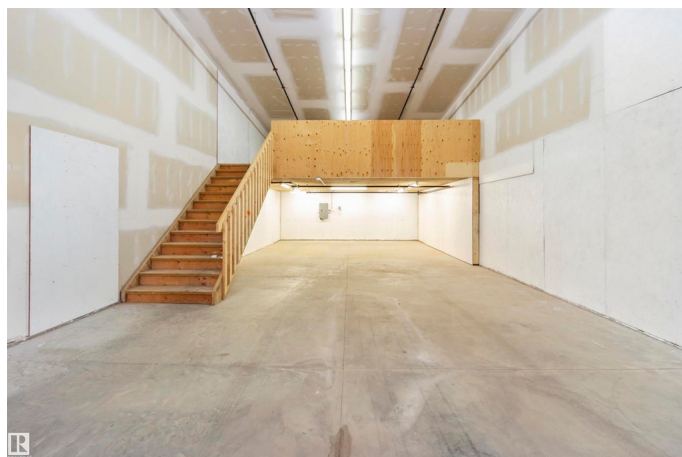
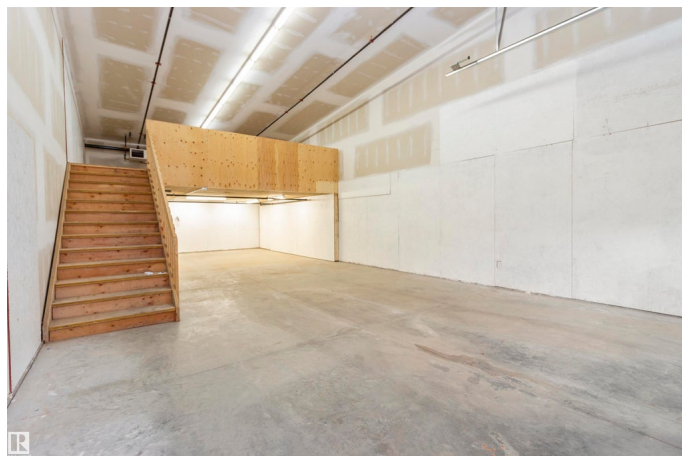
Built in 2012

Essential Information

MLS® #	E4461456
Price	\$307,000
Bathrooms	0.00
Acres	0.00
Year Built	2012
Type	Industrial
Status	Active

Community Information

Address 25 9903 209 Street



Area	Edmonton
Subdivision	Lewis Farms Industrial
City	Edmonton
County	ALBERTA
Province	AB
Postal Code	T5T 5X9

Exterior

Exterior	Wood Frame
Construction	Wood Frame

Additional Information

Date Listed	October 9th, 2025
Days on Market	4
Zoning	Zone 58

DATA IS DEEMED RELIABLE BUT IS NOT GUARANTEED ACCURATE BY THE REALTORS® ASSOCIATION OF EDMONTON. COPYRIGHT 2025 BY THE REALTORS® ASSOCIATION OF EDMONTON. ALL RIGHTS RESERVED. Trademarks are owned or controlled by the Canadian Real Estate Association (CREA) and identify real estate professionals who are members of CREA (REALTOR®, REALTORS®) and/or the quality of services they provide (MLS®, Multiple Listing Service®)

Listing information last updated on October 13th, 2025 at 1:47pm MDT